

# PC-Crash 14.0 Download Guide



**PC-Crash**  
Version 14.0

Mechanical Models by:  
Dr. Hermann Steffan, Dr. Andreas Moser

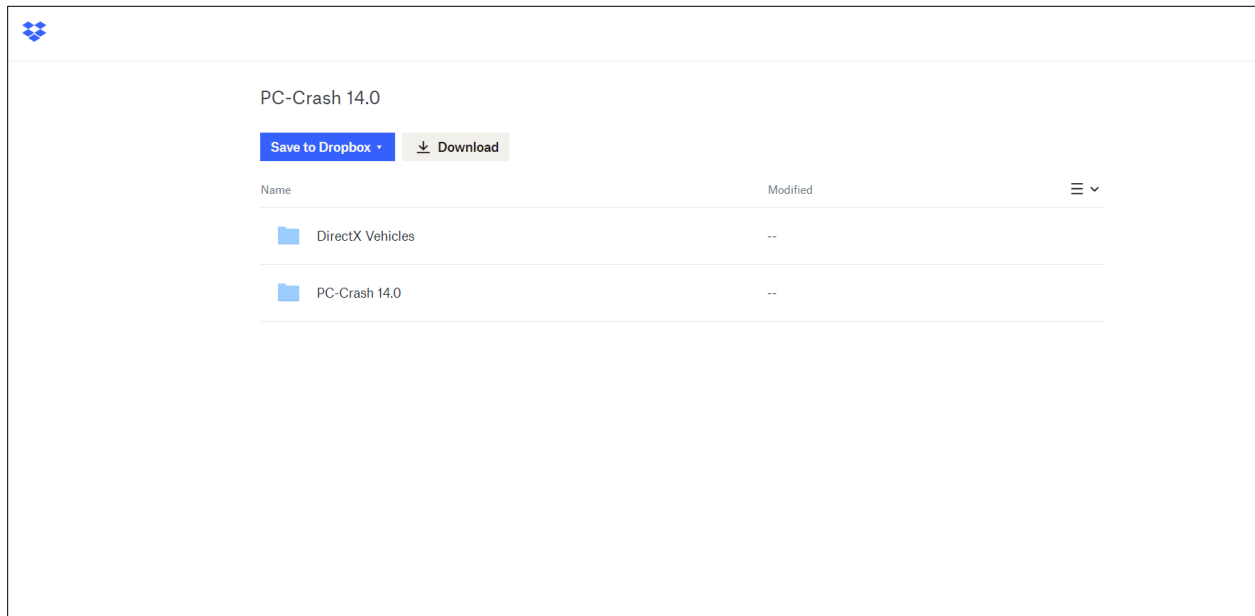
Windows programming by:  
A. Moser, E. Golovics, B. Kunnert, W. Neubauer

Copyright © 2012 BSD Dr. Steffan Datentechnik GmbH Linz, Austria

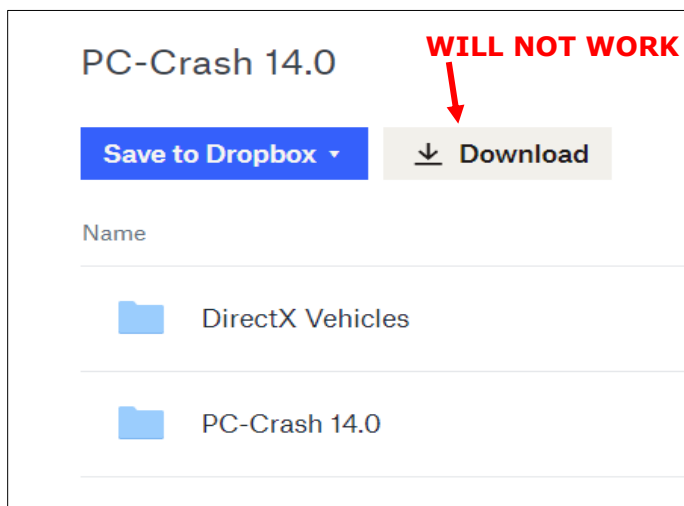
This program is protected by U.S. and international copyright laws as described in the About Box

## PC-Crash 14.0 Download

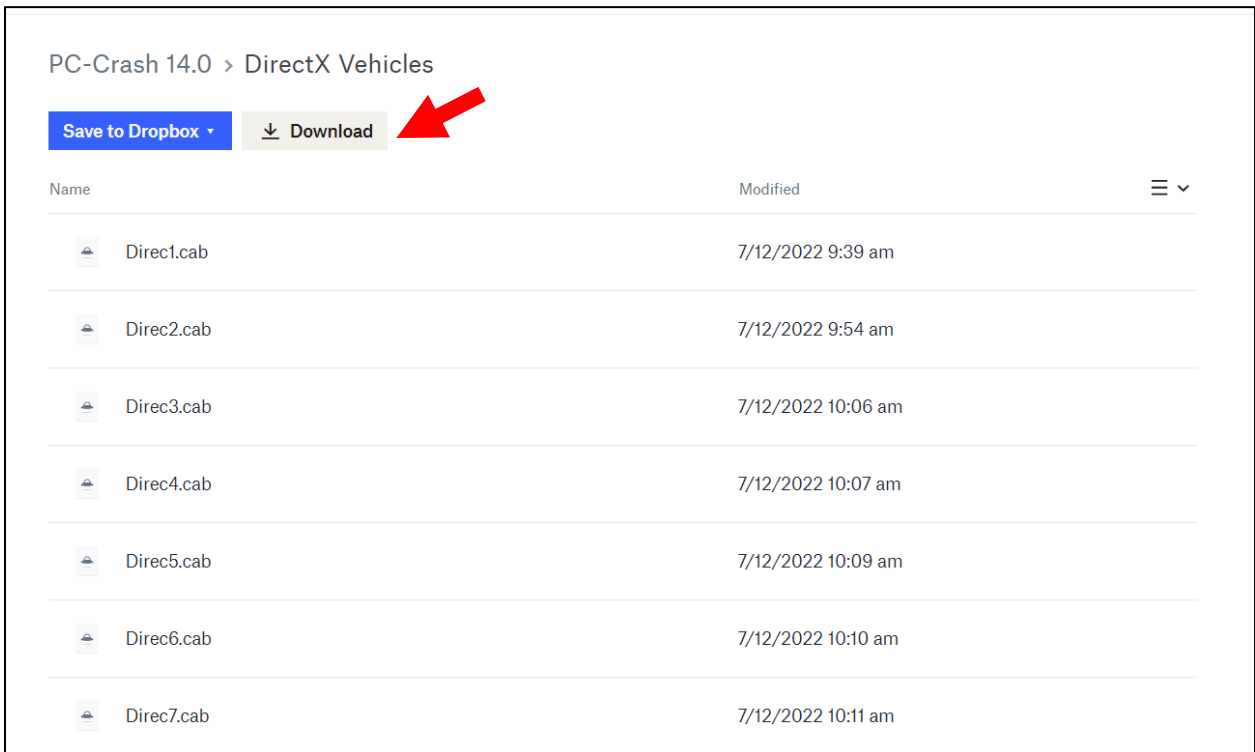
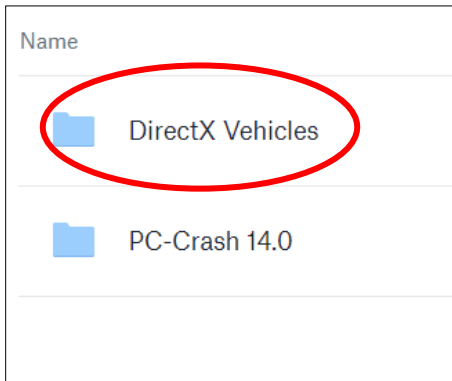
Clicking on the link provided should take you to a Dropbox folder with two folders (DirectX Vehicles and PC-Crash 14.0). **Please be advised that PC-Crash 14.0 is roughly 20GB** and you may need to free up storage space if necessary. You do not need a Dropbox account to download the contents of PC-Crash.



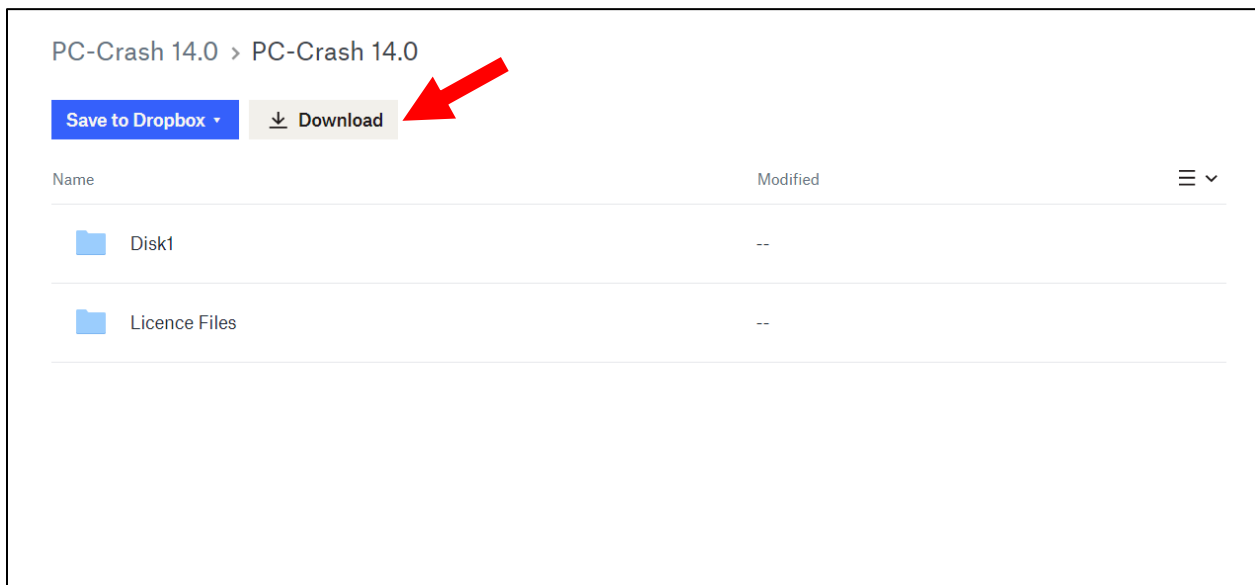
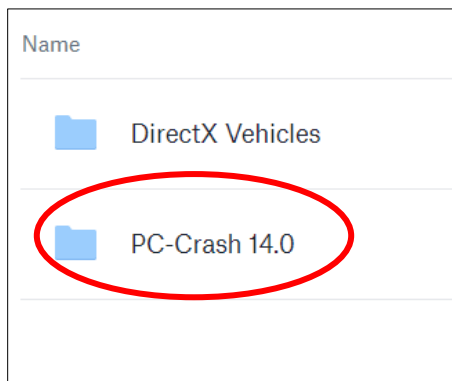
**Before you begin, please be advised that because the software is 20GB, Dropbox will consider the file as too big and will not allow for you to download both folders at the same time (through the Download button). Because of this, you must download each folder individually.**



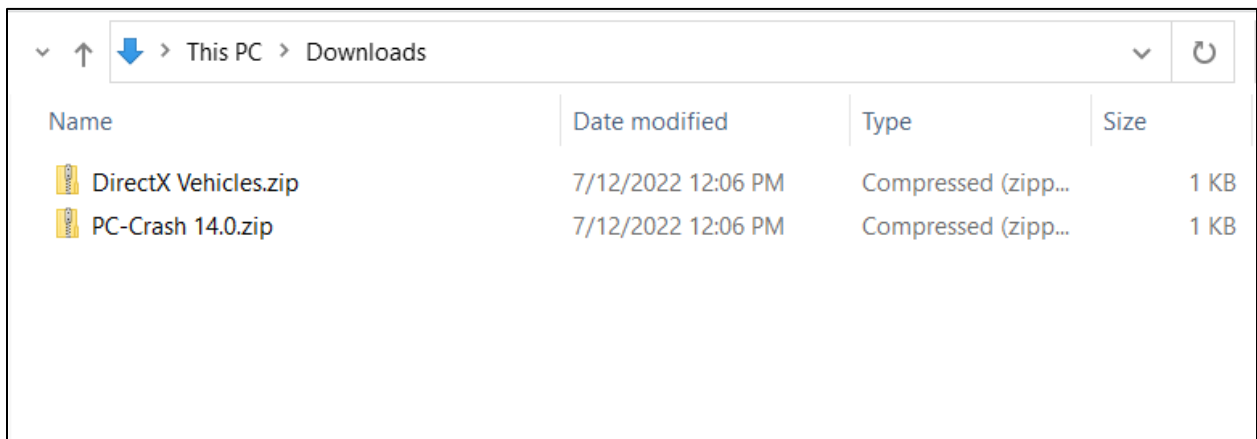
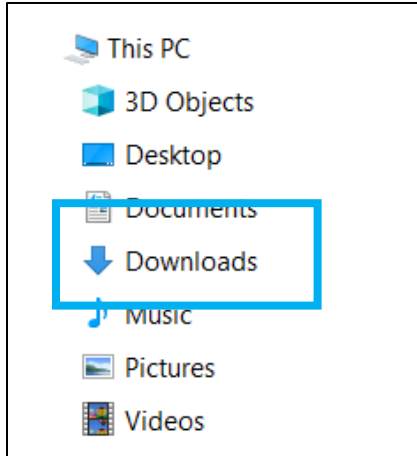
First, click [DirectX Vehicles](#). The page should load several files starting with "DirecX.cab" (where X is a number) and a "DirectX.msi" file. Click the [Download](#) button and the download should start immediately.



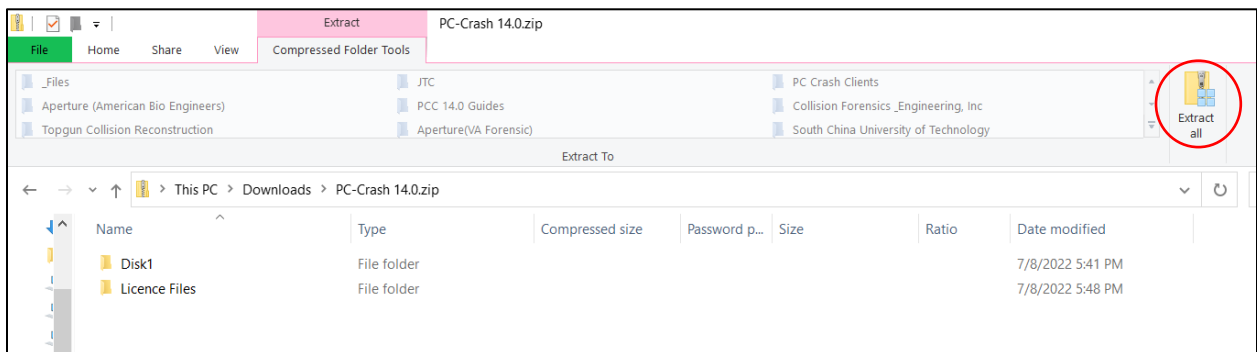
Go back to the previous page. Then, click on [PC-Crash 14.0](#). This should load a page with two folders: Disk1 and Licence Files. Click the [Download](#) button and the download should start immediately.



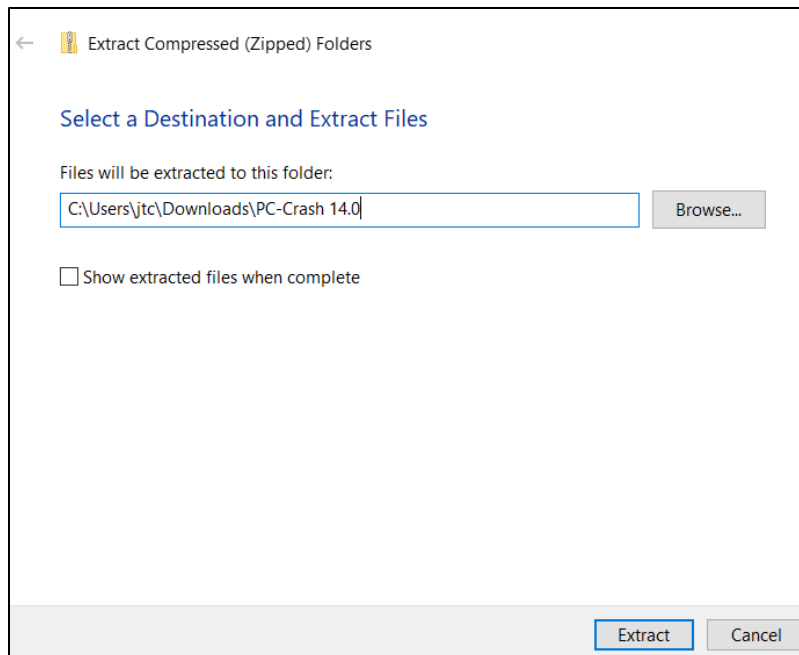
Locate where in your computer you downloaded the folders (typically in Downloads).



If you followed the instructions correctly, you should have two zip compressed folders: "DirectX Vehichles.zip" and "PC-Crash 14.0.zip." Extract the contents of these folders using Windows' built-in extractor (you may also use third party extracting software, such as WinRAR or 7zip, however you may run into issues). Click on a folder and click on Extract All on the top right of the window.



Ensure that the extract location is correct and click Extract.



**Repeat the extract steps with the other folder.**

Following the steps up to this point should give you two new folders: DirectX Vehicles and PC-Crash 14.0. You may move the DirectX Vehicles folder into the PC-Crash 14.0 folder to prevent the folder from getting lost and for convenience.

**The main folders that are needed for PC-Crash installation are the following:**

- 1) DirectX Vehicles – This is the vehicle database**
- 2) Disk1 – This contains installation files for the PC-Crash software**
- 3) Licence Files – This contains the necessary file for applying licenses to PC-Crash**

Name	Date modified	Type	Size
DirectX Vehicles	7/11/2022 10:19 AM	File folder	
Disk1	7/11/2022 10:20 AM	File folder	
Licence Files	7/11/2022 10:20 AM	File folder	

**Before you install PC-Crash, be sure to have these folders.**

## PC-Crash 14.0 Install

For installation instructions, please refer to the provided PDF "PC-Crash 14.0 Installation Guide."