

PC-Crash 14.0 Installation Guide



PC-Crash
Version 14.0

Mechanical Models by:
Dr. Hermann Steffan, Dr. Andreas Moser

Windows programming by:

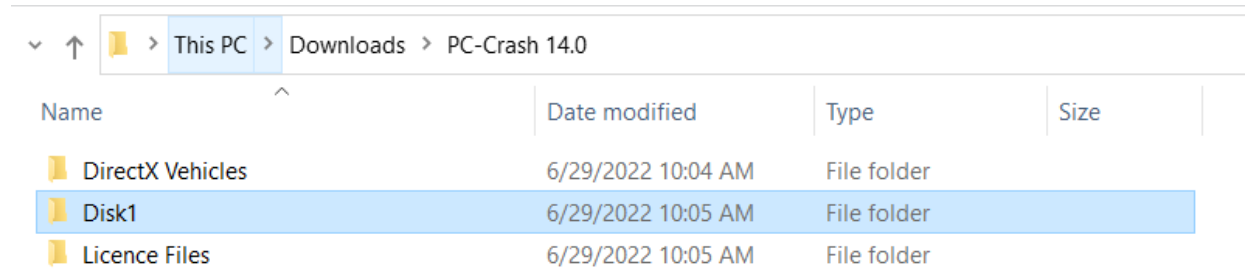
A. Moser, E. Golovics, B. Kunnert, W. Neubauer

Copyright © 2012 BSD Dr. Steffan Datentechnik GmbH Linz, Austria

This program is protected by U.S. and international copyright laws as described in the About Box

PC-Crash 14.0 Disk 1 Installation

Before you begin, DO NOT insert your dongle/hardware key. Open Disk 1 folder. Double-click on the Setup.exe file (see screenshots below). If you get a User Account Control message, select Yes.



The screenshot shows a Windows File Explorer window with the address bar set to 'This PC > Downloads > PC-Crash 14.0'. The main area displays a table of files and folders. The 'Disk1' folder is selected and highlighted in blue.

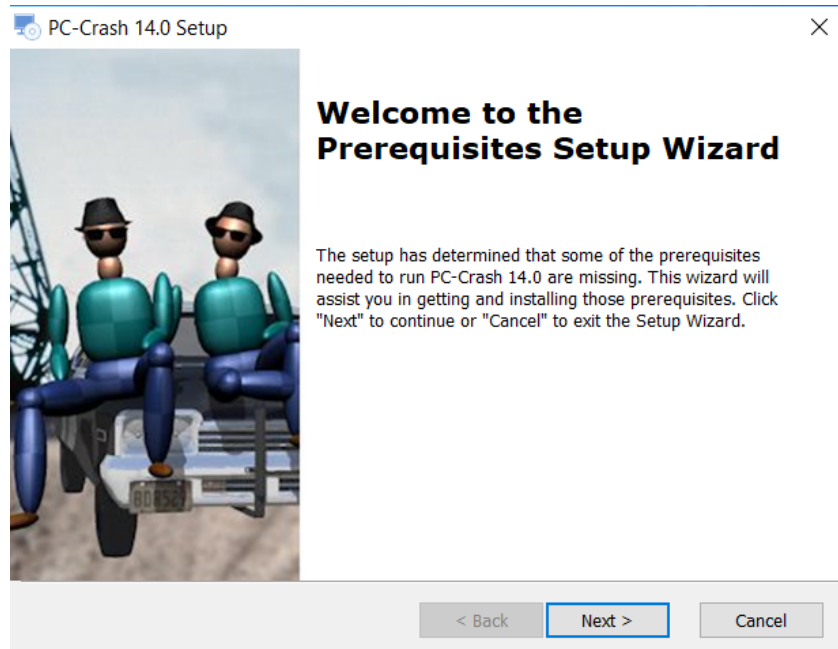
Name	Date modified	Type	Size
DirectX Vehicles	6/29/2022 10:04 AM	File folder	
Disk1	6/29/2022 10:05 AM	File folder	
Licence Files	6/29/2022 10:05 AM	File folder	

This PC > Downloads > PC-Crash 14.0 > Disk1

Name	Date modified	Type	Size
AviSynthPlus	6/29/2022 10:04 AM	File folder	
DirectX	6/29/2022 10:04 AM	File folder	
Hardlock	6/29/2022 10:04 AM	File folder	
HaspHL	6/29/2022 10:04 AM	File folder	
VCRedist2015_2019	6/29/2022 10:05 AM	File folder	
2DDxf.msi	6/14/2022 8:08 AM	Windows Installer ...	79,662 KB
DBPreview.msi	6/14/2022 8:09 AM	Windows Installer ...	464,648 KB
EESCat.msi	6/14/2022 8:09 AM	Windows Installer ...	250,860 KB
FCE.msi	6/14/2022 8:09 AM	Windows Installer ...	30,038 KB
PCCra1.cab	6/14/2022 8:09 AM	Cabinet File	693,248 KB
PCCra2.cab	6/14/2022 8:09 AM	Cabinet File	693,248 KB
PCCra3.cab	6/14/2022 8:09 AM	Cabinet File	693,248 KB
PCCra4.cab	6/14/2022 8:09 AM	Cabinet File	342,884 KB
PCCrash.msi	6/14/2022 8:09 AM	Windows Installer ...	2,165 KB
Setup.exe	6/14/2022 8:09 AM	Application	1,704 KB
Sidebmp.msi	6/14/2022 8:09 AM	Windows Installer ...	34,573 KB
Topbmp.msi	6/14/2022 8:09 AM	Windows Installer ...	10,461 KB
Windows6.0-KB942288-v2-x64.msu	6/14/2022 8:09 AM	Microsoft Update ...	3,015 KB
Windows6.0-KB942288-v2-x86.msu	6/14/2022 8:09 AM	Microsoft Update ...	1,727 KB
WindowsXP-KB942288-v3-x86.exe	6/14/2022 8:09 AM	Application	3,250 KB

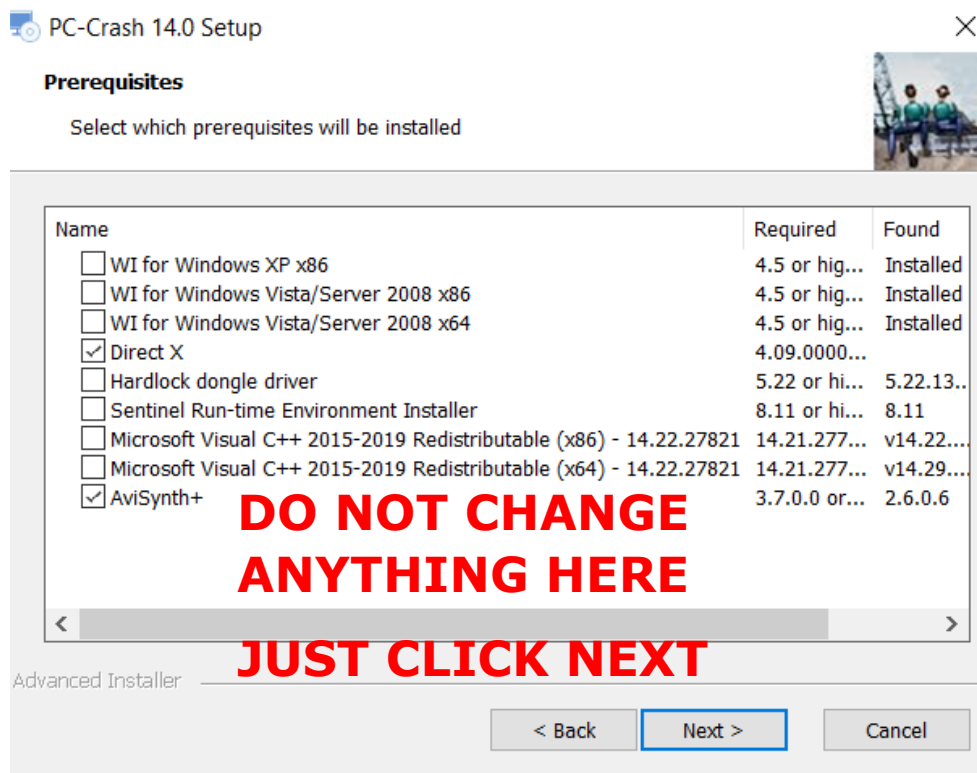
Prerequisites

At this time, setup will determine whether any prerequisites that are needed to run PC-Crash 14.0 are missing. A window named "Welcome to the Prerequisites Setup Wizard" (see below) will appear if necessary.



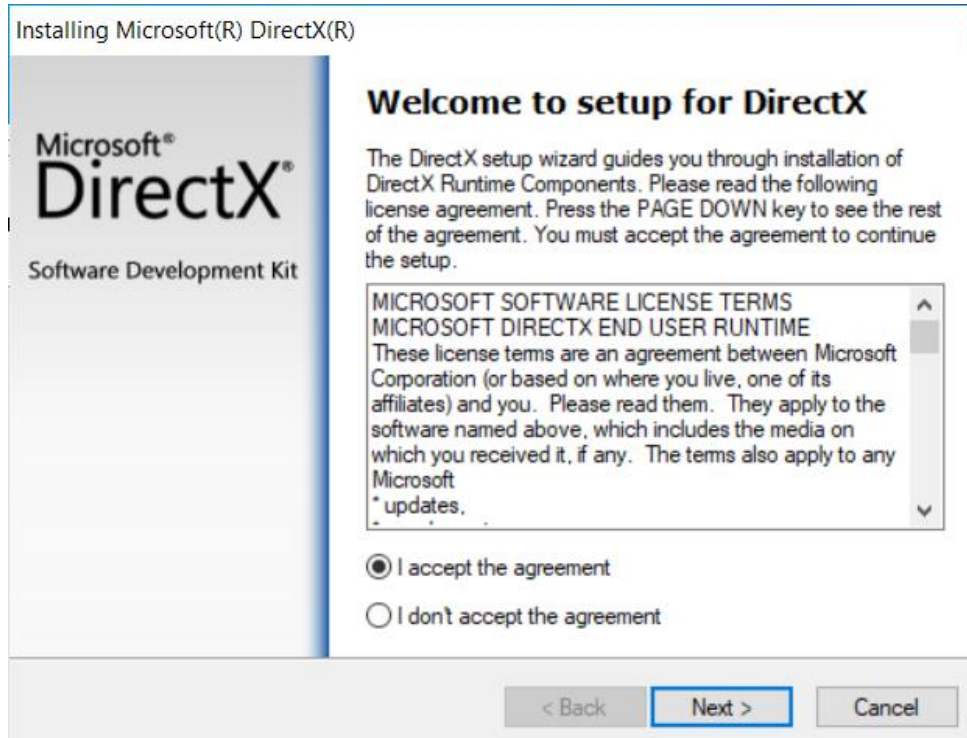
Select Next if this window appears. Another window will appear with some checkboxes filled, some empty.

****PC-Crash setup will determine which prerequisites are missing on your computer. Please do not uncheck/check additional boxes. ****



Microsoft DirectX

If you receive a "Welcome to setup for DirectX," select I accept the agreement and click Next. Click Next again and DirectX will begin installing.



Microsoft Visual C++

Most commonly, the x86 and x64 Microsoft Visual C++ Redistributables will need to be installed. Please install both the x86 and x64 versions.

Microsoft Visual C++ 2015-2019 Redistributable (x86) - 14.22.27821

MICROSOFT SOFTWARE LICENSE TERMS

MICROSOFT VISUAL C++ 2019 RUNTIME

These license terms are an agreement between Microsoft Corporation (or based on where you live, one of its affiliates) and you. They apply to the software named above. The terms also apply to any Microsoft services or

I agree to the license terms and conditions

Install

Close

Microsoft Visual C++ 2015-2019 Redistributable (x86) - 14.22.27821

Setup Successful

Close

Microsoft Visual C++ 2015-2019 Redistributable (x64) - 14...

Microsoft Visual C++ 2015-2019 Redistributable (x64) - 14.22.27821

MICROSOFT SOFTWARE LICENSE TERMS

MICROSOFT VISUAL C++ 2019 RUNTIME

These license terms are an agreement between Microsoft Corporation (or based on where you live, one of its affiliates) and you. They apply to the software named above. The terms also apply to any Microsoft services or

I agree to the license terms and conditions

Install

Close

Microsoft Visual C++ 2015-2019 Redistributable (x64) - 14...

Microsoft Visual C++ 2015-2019 Redistributable (x64) - 14.22.27821

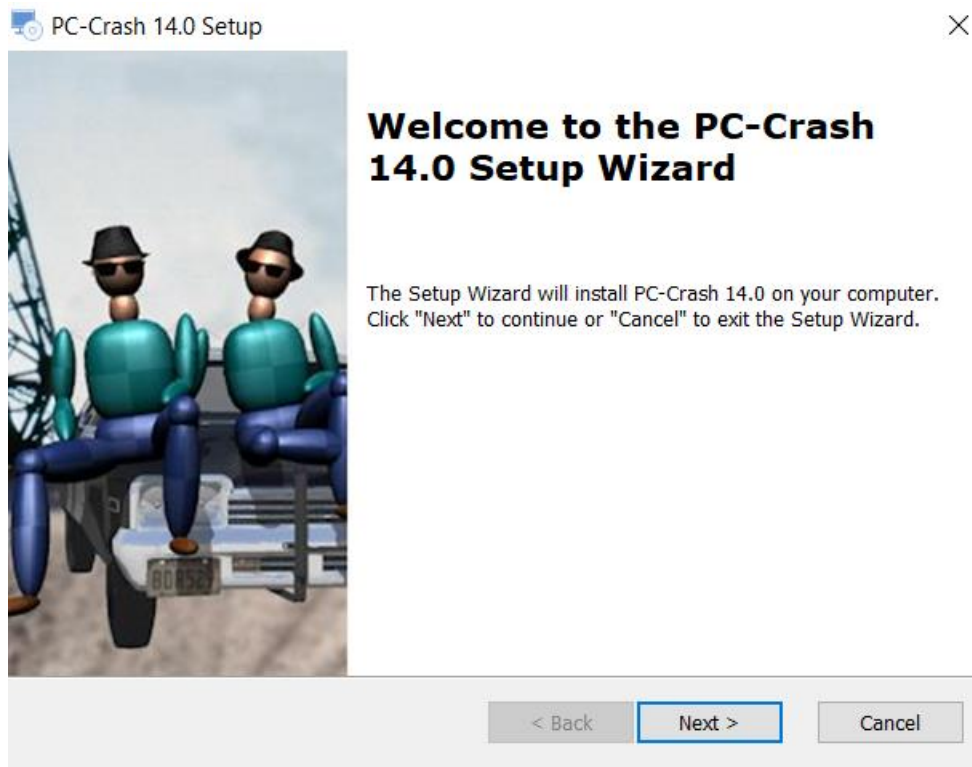
Setup Successful

Close

After the prerequisites are installed, PC-Crash 14.0 installation will begin.

Disk 1 Installation Continued

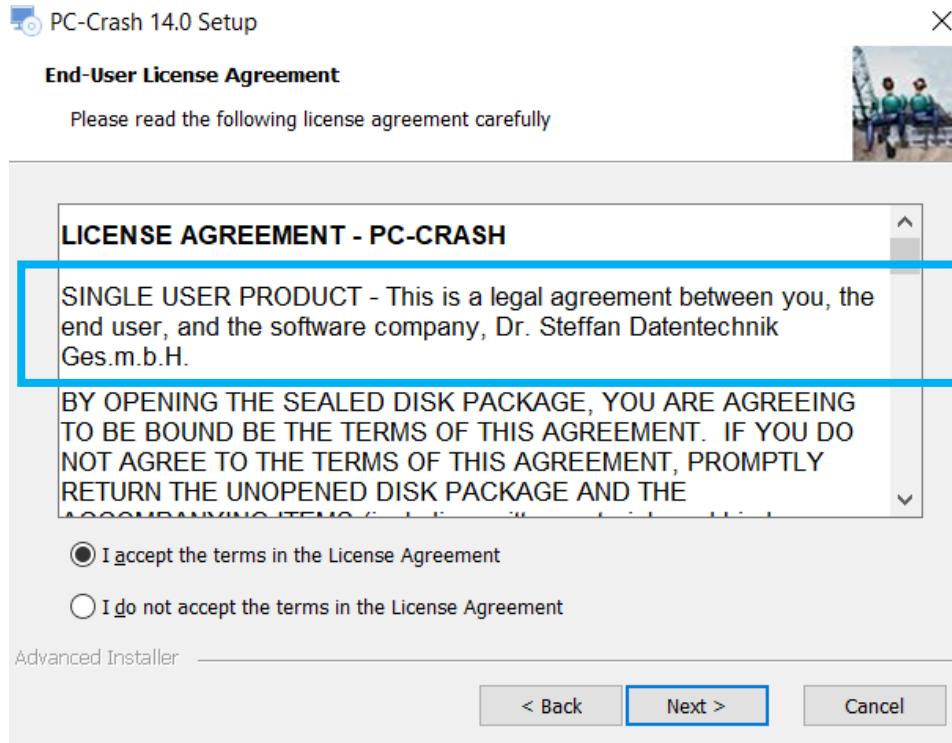
Select Next to continue with installation.



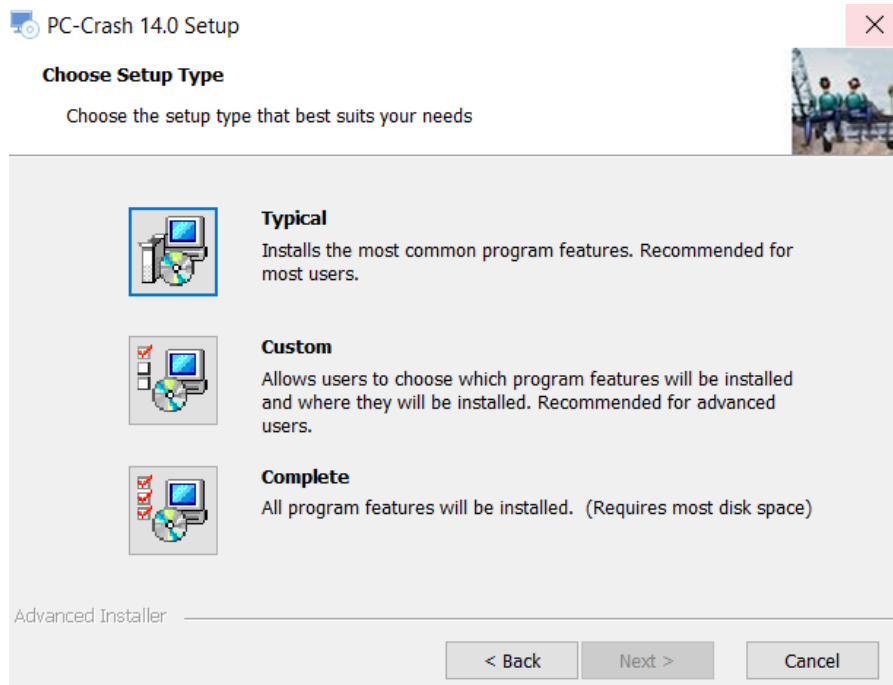
End-User License Agreement

You must accept the terms in the License Agreement in order to proceed with installation.

Note: PC-Crash is licensed by single user hardware lock. Licensing does not support remote authentication.

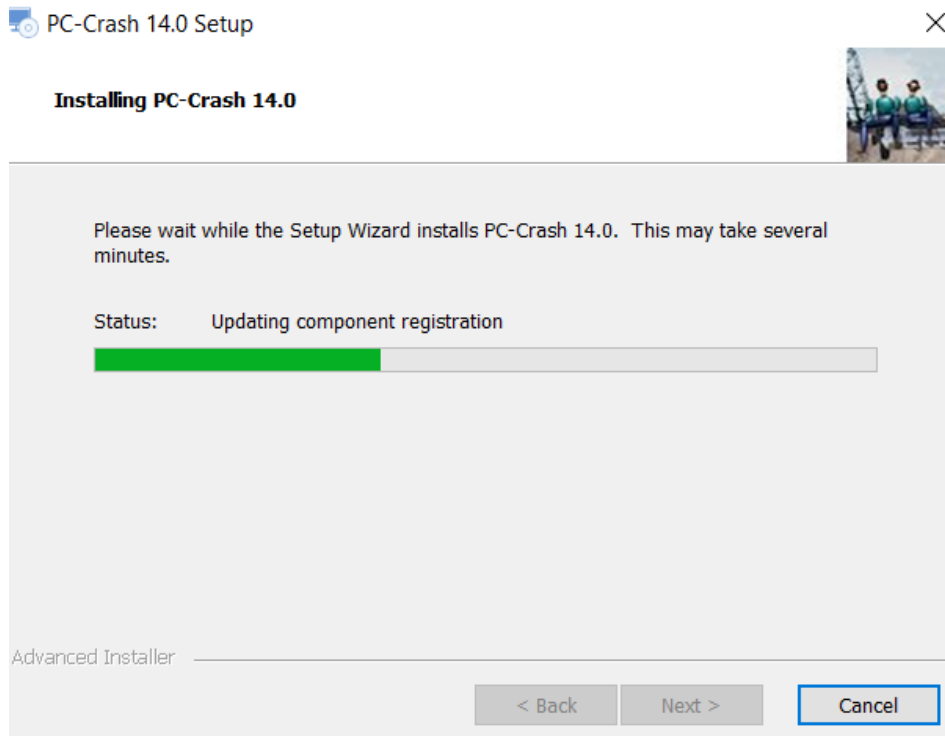


Please choose setup type, which is usually "Typical":

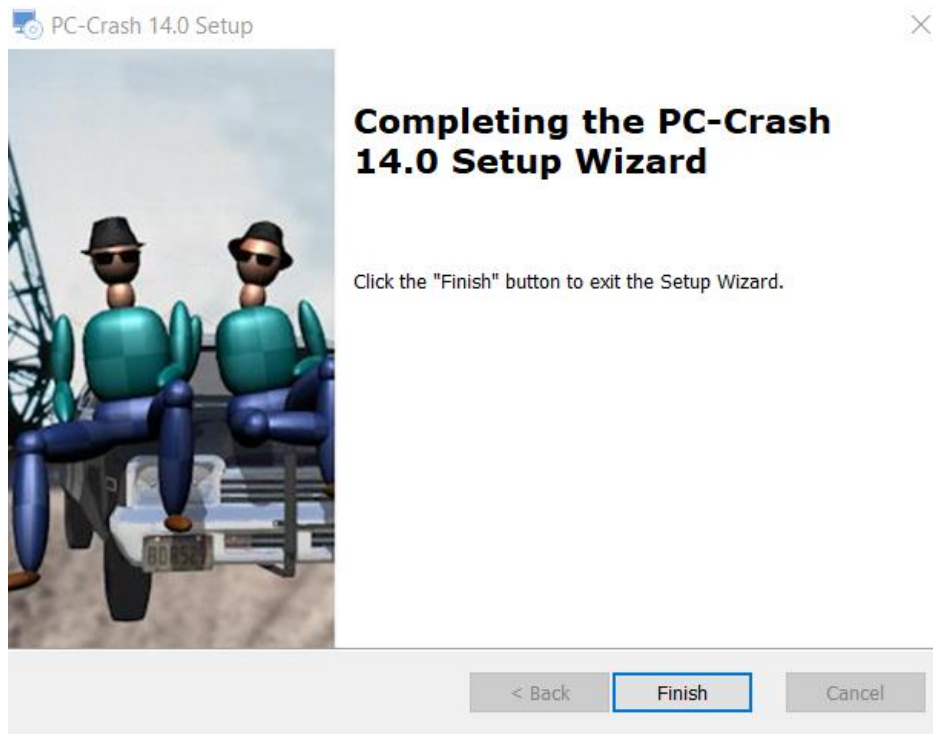


After selecting setup type, select Install.

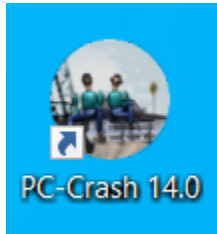
Let the installer run. During installation, a second window may open, as different components are being installed. The second window will close automatically.



Once the installation is complete, the window below will appear. Select Finish to exit.

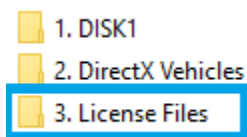


The PC-Crash 14.0 desktop icon will be visible at this point. Do not open the software yet.

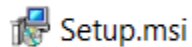


License Files

You must save the license files found in the 'License Files' folder to your computer.



There will be a "Setup.msi" file. If you do not see the file, please contact PC-Crash Support (support@pc-crash.com) and you will be provided it.



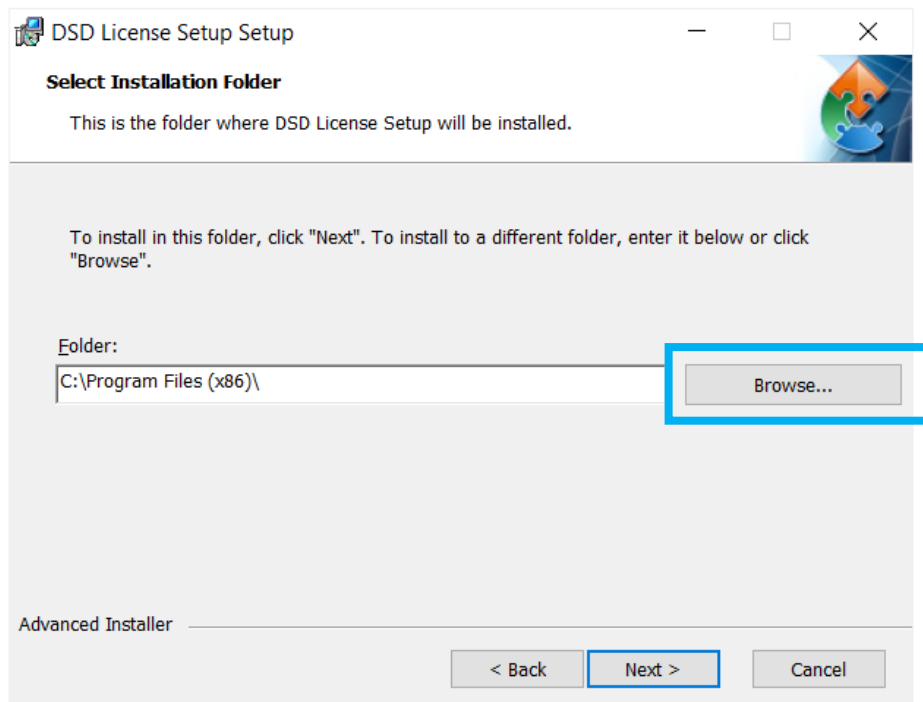
Run the Setup.msi file and follow the on-screen instructions.

The following steps will be very important in ensuring that your license is applied. Please follow them carefully.

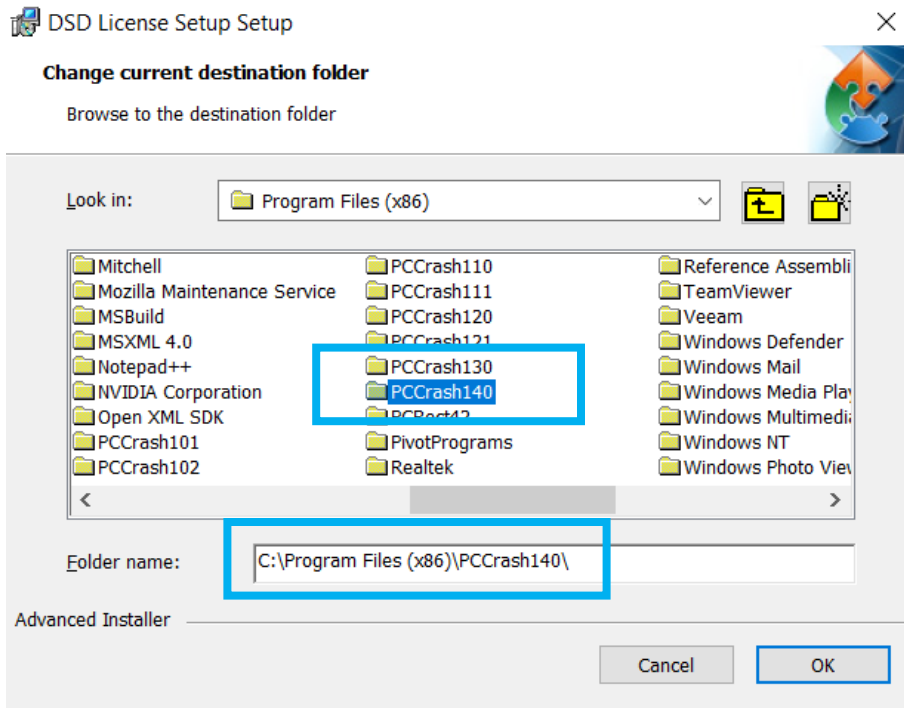
Click Next when you see the setup wizard window.



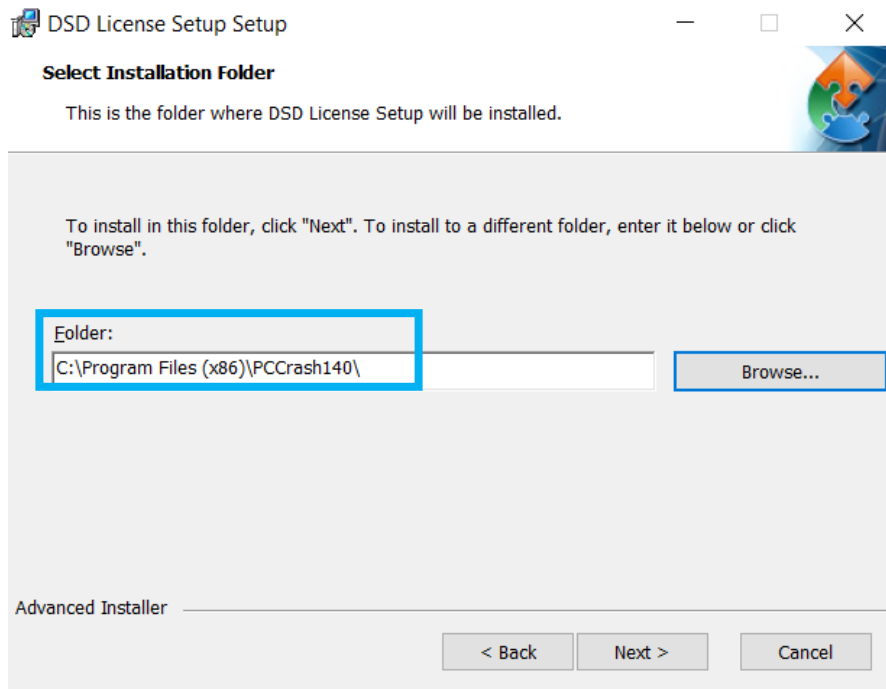
When selecting a folder, select Browse and navigate to the **PCCrash140** folder, which was created during the Disk 1 installation.



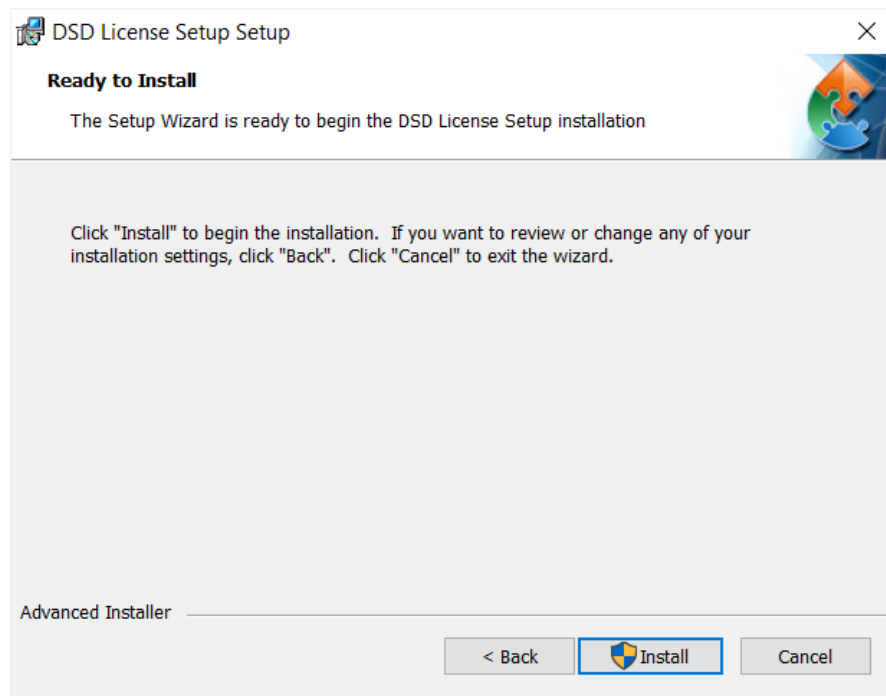
Click the PCCrash140 folder **once** and the folder path should be displayed on the bottom text bar under "Folder name:".



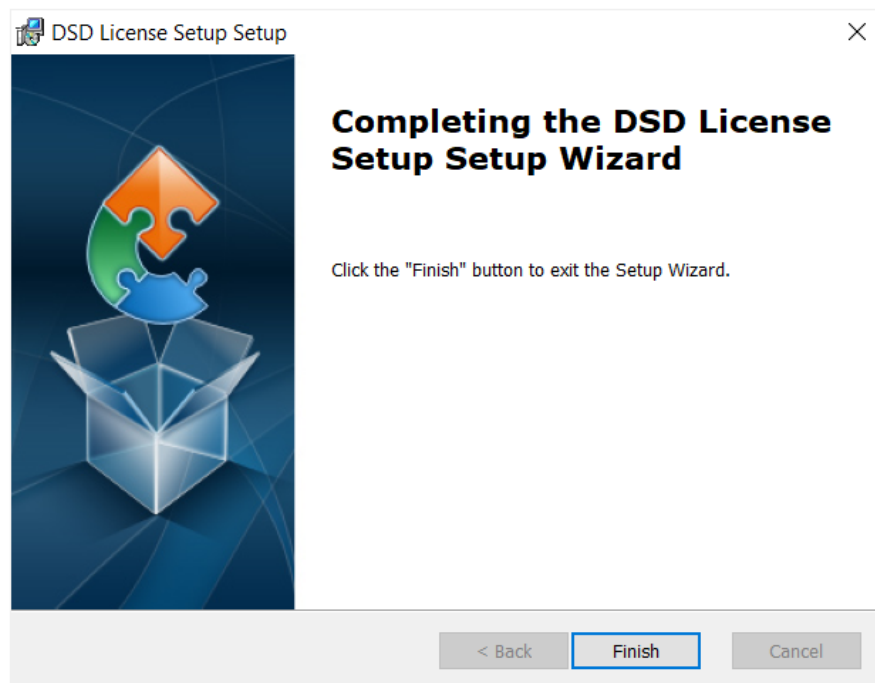
Ensure that the path on the text bar is correct and then click Next.




Click Install. If you get a User Account Control message, click Yes.





Click Finish.




You may check if the Setup.msi file successfully installed the necessary licenses by checking your PCCrash140 folder. On your PC-Crash 14.0 folder, you will notice the addition of the following files and folders:

 win32

 win64

 Strlib32.dll

 Strlib64.dll

These are the necessary files that apply licenses to PC-Crash. If these files are missing, PC-Crash will run in "demo version" or "demo mode" and you will need to contact the Support Team.

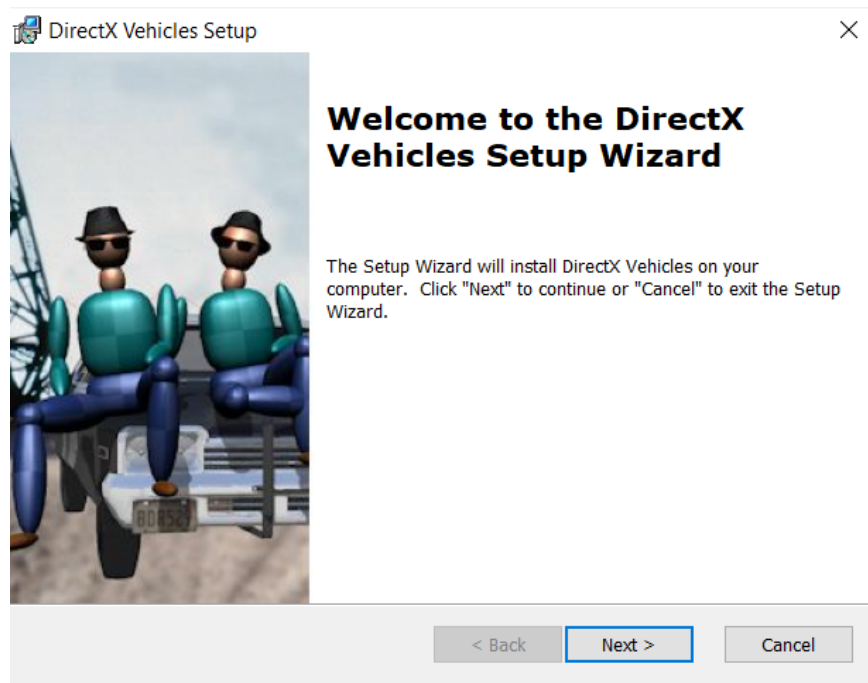
DirectX Vehicles Installation

Navigate to the DirectX vehicles folder and double-click on it.

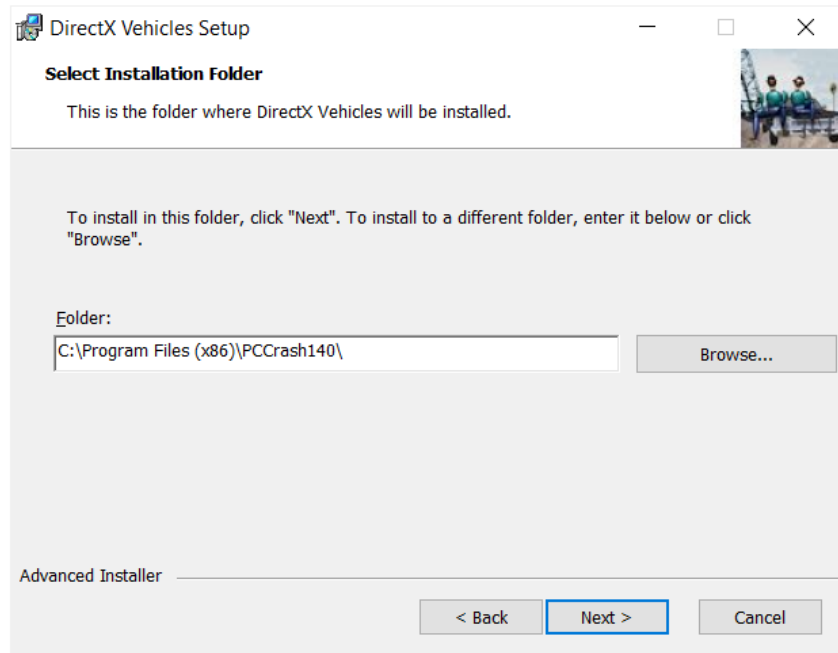
- 1. DISK1
- 2. DirectX Vehicles
- 3. License Files

Navigate to "DirectX.msi," which you may need to scroll all the way down to find. Double-click on the file and the DirectX Setup Wizard should open. Follow the on-screen instructions.

Click Next.

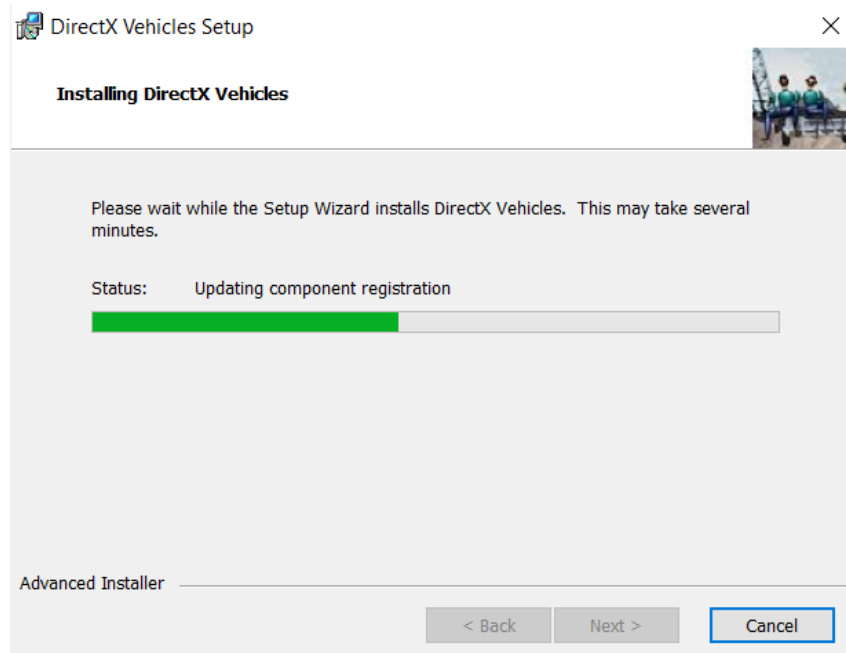


Navigate once again to your PCCrash140 folder (browse to it if you need to), although it may already show the correct path. In either case, ensure that the path is correct and click Next.

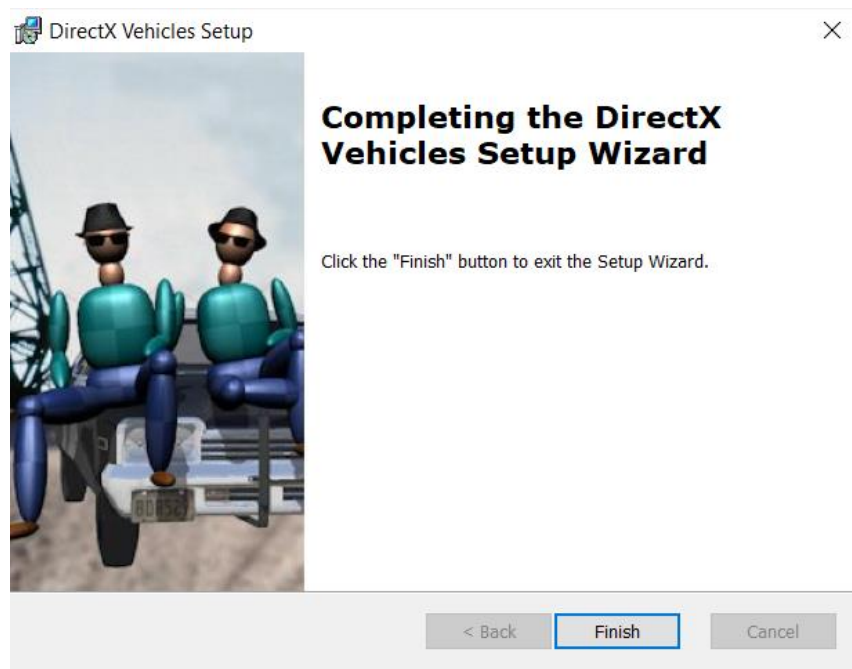


Then click Install. If you get another "User Account Control" message, select Yes.

Wait for DirectX Vehicles to install, which may take some time.



Click Finish once the installation is complete.



Run PC-Crash

At this point, PC-Crash has now been completely installed including DirectX vehicle shapes. Insert your dongle/hardware key first and then run PC-Crash. PC-Crash will open in demo version if a dongle/hardware key is not inserted.

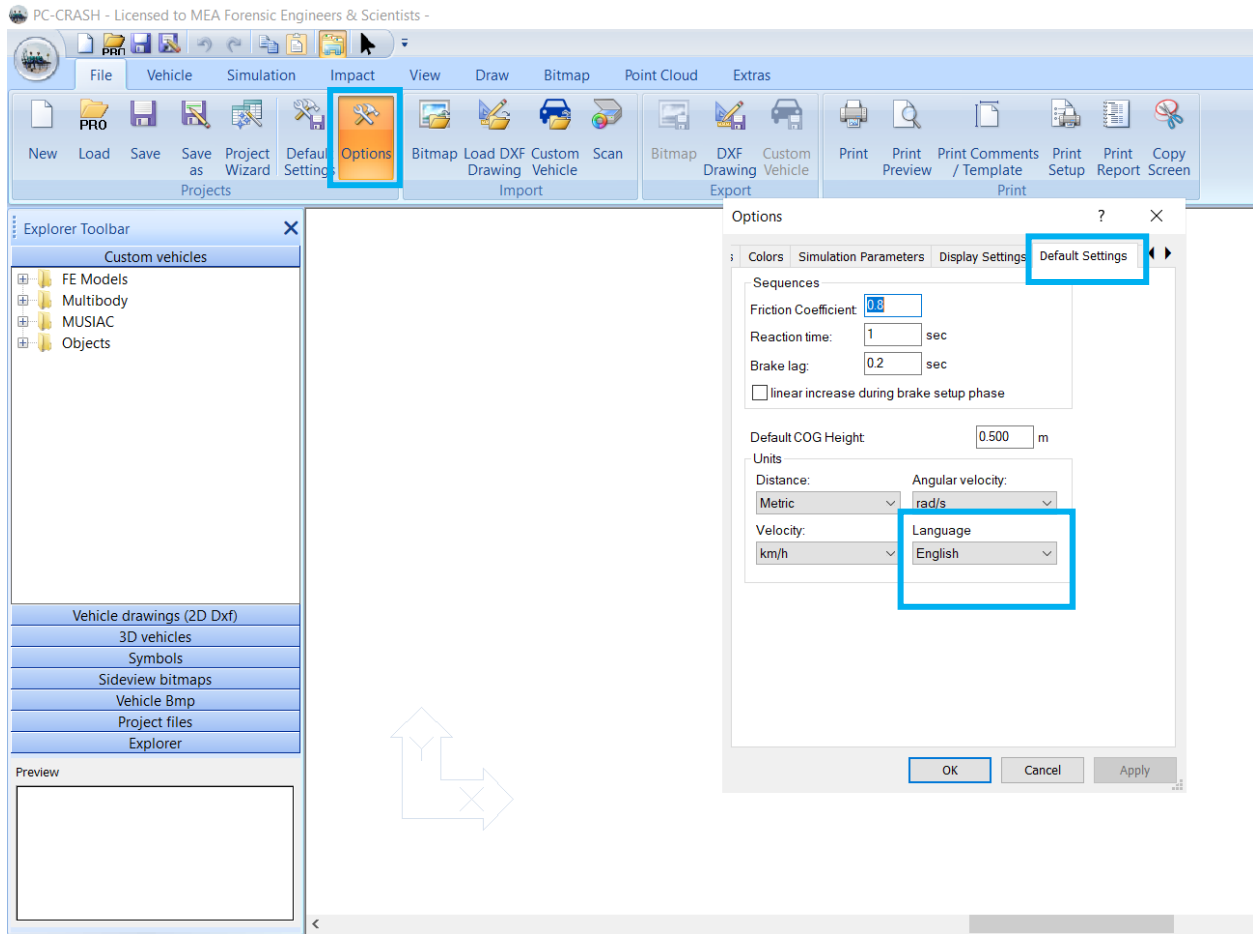


Language

The language selection window will appear the first time you launch PC-Crash. Choose language accordingly.

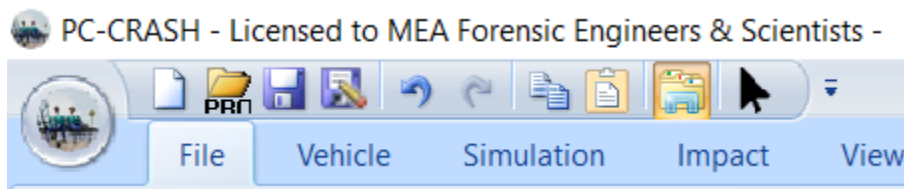


If you need to change the language later, this setting is found under Options > Default Settings (as shown below).



License verification

When PC-Crash is running (and your dongle/hardware key is inserted), your company name will appear at the top of the window.



If your company name does not appear at the top and says "Licensed to Demoverision", please double check that you have saved the license files to the 'PCCrash140' folder on your computer.

Also check if your dongle/hardware key is illuminated and/or in a working USB port. Preferably use a port directly on the computer and not on a hub or extension cable.

Still running in "Demoverision"? Please see our FAQ page on our website (www.pc-crash.com) for further troubleshooting, please email support@pc-crash.com.

PC-Crash Updater

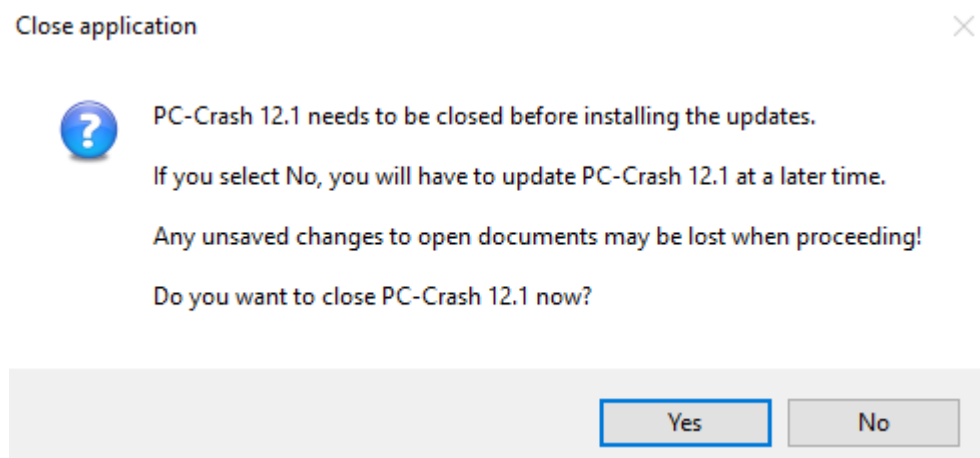
After launching PC-Crash, you may also have another pop-up window “updater.exe” requesting to make changes to computer. At start-up, PC-Crash will check for updates. **(Please note this updater checks for updates for the current version of PC-Crash; this is not the process to upgrade to a new software version)**



If you select “Yes” to make changes, PC-Crash will check for updates and notify you before installing updates. Once the update check is complete, you will see the following window if there no new updates:



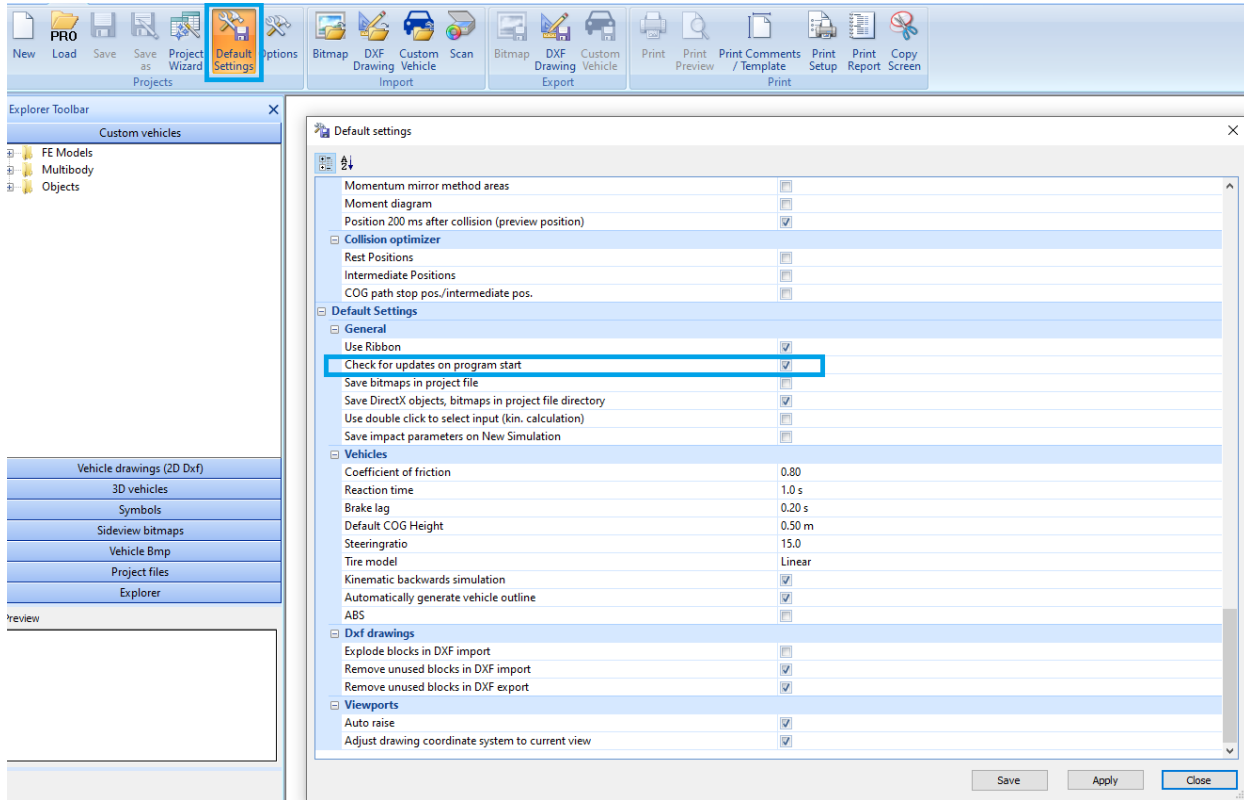
Or this window if an update is available, the following prompt will appear (the following screenshot is an example from PC-Crash version 12.1, but the same principle also applies to 14.0):



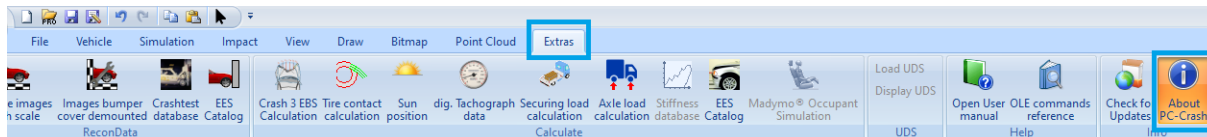
Sometimes the updater can slow down launching of PC-Crash. If you would rather not check for updates on program start, or you do not have administrator privileges on your computer (speak with your IT department on what permission settings you have), you can turn this feature off.

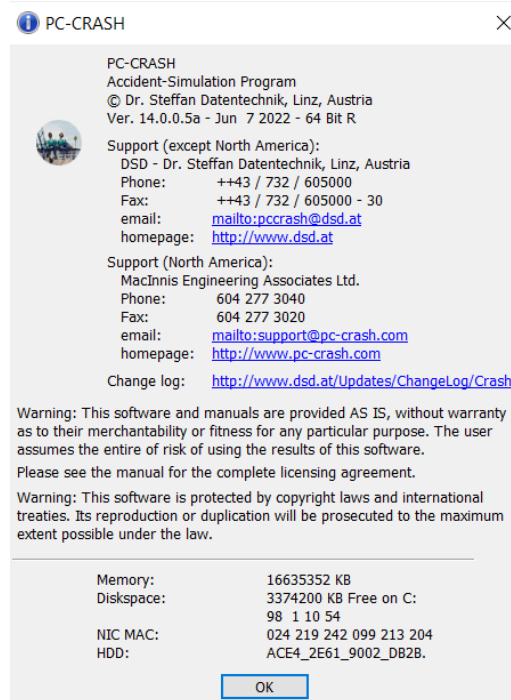
Once PC-Crash is open, go to "Default Settings" and scroll down until you find "Check for updates on program start". You may need to expand menus if you cannot find this option.

Select or de-select the check box depending on your preference. Hit Apply and Save, then close the window.

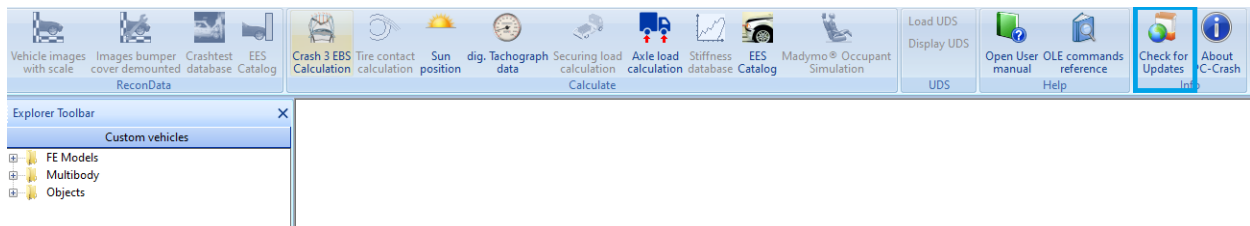


If you would like to see which version number you are operating, navigate to "About PC-Crash" which is found under the "Extras" tab.





At any time, you can check for updates manually by navigating to the “Extras” tab > “Check for Updates”



Vehicle Database

To access North American vehicles, go to “Default Settings” and change the vehicle database directory to the SPECS folder in your PC-Crash program folder.

Directories	
Project files	
Project files	C:\Program Files (x86)\PCCrash140\Examples\
Update directories automatically	<input checked="" type="checkbox"/>
Project templates	
Project templates	C:\Users\jtc\Documents\PCCrash140\Templates\
Car Database:	
Car Database:	C:\Program Files (x86)\PCCrash140\specs\dsd 2022.db
Database preview images	
Database preview images	C:\Program Files (x86)\PCCrash140\DBPreview\
Database preview images 2	C:\Program Files (x86)\PCCrash140\DBPreview\Pict
Custom vehicles	C:\Users\jtc\Documents\PCCrash140\CustomVehicles\
Vehicle DXF Files:	
Vehicle drawings (2D Dxf)	C:\Program Files (x86)\PCCrash140\2DDxf\
Symbols	C:\Program Files (x86)\PCCrash140\Symbols\
Sideview Dxf	C:\Program Files (x86)\PCCrash140\2DDxf\
Sideview bitmaps	C:\Program Files (x86)\PCCrash140\Sidebmp\
Vehicle Bmp	C:\Program Files (x86)\PCCrash140\Topbmp\
3D vehicles	C:\Program Files (x86)\PCCrash140\3DDxf\
3D vehicles (X61)	C:\Program Files (x86)\PCCrash140\3DDxf\
Animations	
Animations	C:\Program Files (x86)\PCCrash140\
Update directories automatically	<input checked="" type="checkbox"/>
Bitmaps	
Bitmaps	C:\Program Files (x86)\PCCrash140\
Update directories automatically	<input checked="" type="checkbox"/>
Dxf drawings	
Dxf drawings	C:\Program Files (x86)\PCCrash140\2DDxf\
Update directories automatically	<input checked="" type="checkbox"/>

To update the vehicle database to include the latest model year

Please visit our website: [PC-Crash FAQ](#) and navigate to the following:

🔔 **My Vehicle database doesn't have the latest model year.**

Download this SPECS update, and unzip to the specs subfolder in your PC-Crash program folder.

Select “Download this SPECS” to download the update.

Unzip the file and move it to the 'specs' subfolder in your PC-Crash program folder.

This PC > OS (C:) > Program Files (x86) > PCCrash140				
Name	Date modified	Type	Size	
ShellExtension	6/29/2022 11:23 AM	File folder		
Sidebmp	6/29/2022 11:25 AM	File folder		
Sky Textures	6/29/2022 11:20 AM	File folder		
specs	6/29/2022 11:22 AM	File folder		

Contact Information

PC-Crash Support

support@pc-crash.com

PC-Crash Courses

courses@pc-crash.com

General Inquiries

info@pc-crash.com

Want to ensure you hear all the latest news regarding PC-Crash? Join our mailing list and you will be notified of new courses/workshops, promotions, and new releases. Emails will come from our general email: info@pc-crash.com

Click [HERE](#) to join our mailing list.