

Updating SPECS Database in PC-Crash - North American vehicles

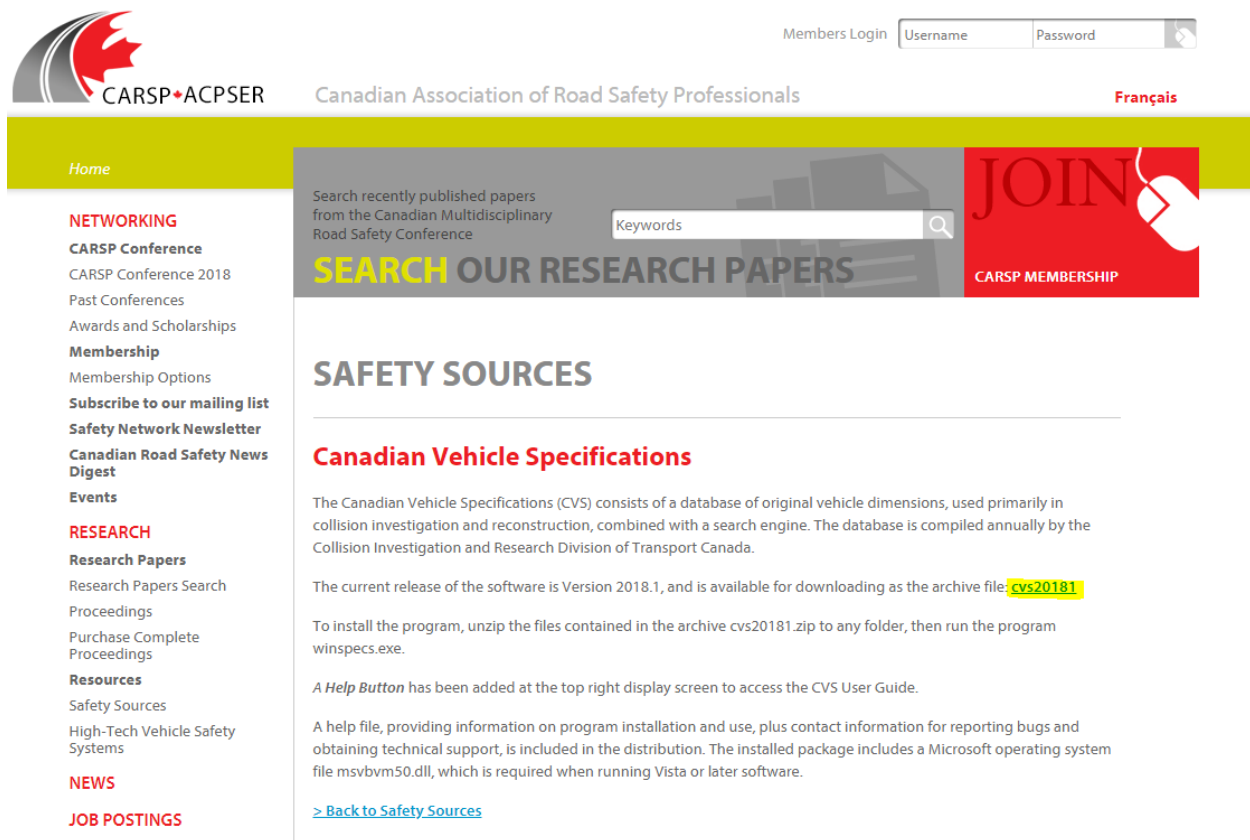
Please note the following instructions are for the North American vehicle database.

PC-Crash will not automatically add new vehicles each year. In order to update your car database, you will need to download the latest 'SPECS' file (North American vehicles).

WARNINGS AND DISCLAIMER - Specs VEHICLE DATABASE The "Specs" vehicle database has been developed by Transport Canada, and is supplied with their authority free of charge for the convenience of PC-Crash users.

Please click the following link to download the current release of the SPECS vehicle database.

<http://www.carsp.ca/research/resources/safety-sources/canadian-vehicle-specifications/>



The screenshot shows the CARSP website. The header includes the CARSP logo, the text 'CARSP+ACPSER Canadian Association of Road Safety Professionals', and a 'Members Login' section with 'Username' and 'Password' fields. A 'Français' link is also present. The main content area is divided into a sidebar and a main section. The sidebar contains links for 'Home', 'NETWORKING' (including CARSP Conference, Past Conferences, Awards and Scholarships, Membership, Membership Options, Subscribe to our mailing list, Safety Network Newsletter, Canadian Road Safety News Digest, and Events), 'RESEARCH' (including Research Papers, Research Papers Search, Proceedings, Purchase Complete Proceedings, and Resources), 'NEWS', and 'JOB POSTINGS'. The main section features a search bar with the text 'Search recently published papers from the Canadian Multidisciplinary Road Safety Conference' and a 'Keywords' input field. Below the search bar is a large red button labeled 'JOIN' with a mouse cursor icon, and a link for 'CARSP MEMBERSHIP'. The main section also has a 'SEARCH OUR RESEARCH PAPERS' button. The 'SAFETY SOURCES' section is highlighted, showing the 'Canadian Vehicle Specifications' page. The text on this page describes the Canadian Vehicle Specifications (CVS) database, its use in collision investigation and reconstruction, and provides instructions for downloading the latest release (Version 2018.1) as an archive file. It also includes a link to the CVS User Guide and a link to the help file.

Once on the webpage, click the download link (highlighted in above screenshot) to begin downloading the latest release. Once the zip folder has been downloaded, unzip the files and save the latest year to the 'specs' folder within your 'PCCrash*xxx*' folder.

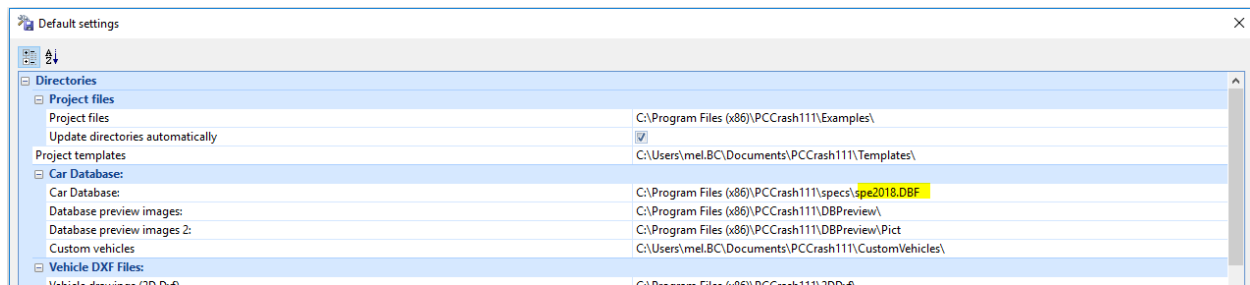
xxx - the last three digits denote the PC-Crash version you have installed on your computer ie. 111 is version 11.1, 102 is version 10.2, etc.

es (x86) > PCCrash111

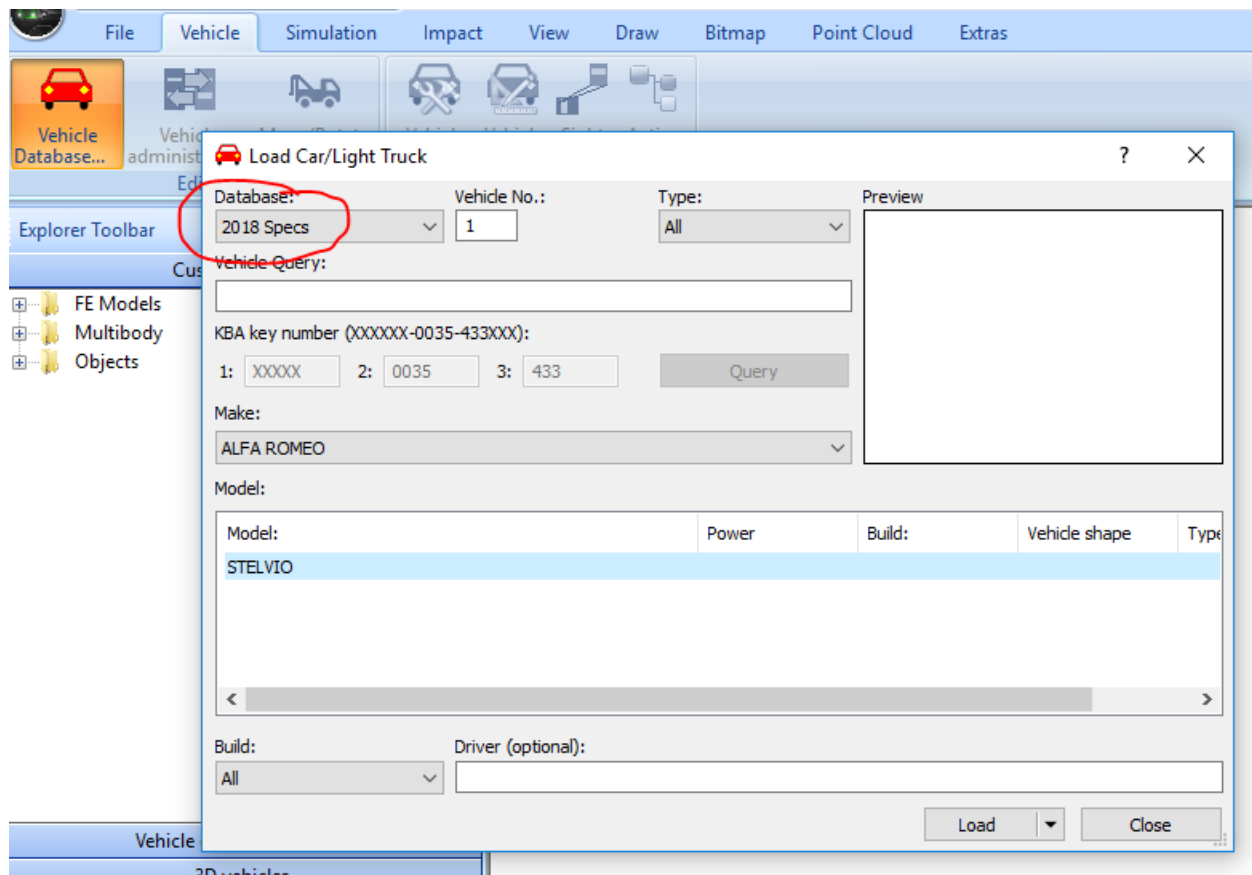
Search PCCrash111

Name	Date modified	Type	Size
2DDxf	2018-05-15 9:19 AM	File folder	
3DDxf	2018-05-15 9:53 AM	File folder	
ActiveSafety	2018-05-15 9:13 AM	File folder	
aladdin	2018-05-15 9:12 AM	File folder	
AvsP	2018-05-15 9:12 AM	File folder	
Backup	2018-05-15 9:14 AM	File folder	
CustomVehicles	2018-05-15 9:13 AM	File folder	
DBPreview	2018-05-15 9:15 AM	File folder	
DongleDriverNT	2018-05-15 9:12 AM	File folder	
EESCat	2018-05-15 9:16 AM	File folder	
Engauge Digitizer	2018-05-15 9:13 AM	File folder	
Examples	2018-05-15 9:14 AM	File folder	
Gmsh	2018-05-15 9:14 AM	File folder	
Help	2018-05-15 9:14 AM	File folder	
Lng	2018-05-15 9:12 AM	File folder	
Macros	2018-05-15 9:14 AM	File folder	
OnlineDocu	2018-05-15 9:14 AM	File folder	
ShellExtension	2018-05-15 9:12 AM	File folder	
Sidebmp	2018-05-15 9:17 AM	File folder	
Sky Textures	2018-05-15 9:12 AM	File folder	
specs	2018-05-15 10:33 ...	File folder	
Symbols	2018-05-15 9:14 AM	File folder	
Templates	2018-05-15 9:13 AM	File folder	
Topbmp	2018-05-15 9:17 AM	File folder	
Translations	2018-05-15 9:12 AM	File folder	
WinwordVorlagen	2018-05-15 9:12 AM	File folder	
3-2-2T.DXF	1996-07-17 12:04 ...	DXF File	27 KB
80-4.DXF	1996-04-08 9:33 PM	DXF File	32 KB
ara32.dll	2018-03-09 1:33 PM	Application extens...	210 KB
ara64.dll	2018-03-09 1:33 PM	Application extens...	210 KB
at3dx(x32).dll	2018-03-09 1:33 PM	Application extens...	7.616 KB

Next you will need to update the directory in Default Settings, see screenshot below.



When you access the Vehicle Database in PC-Crash, you should now see the latest year:



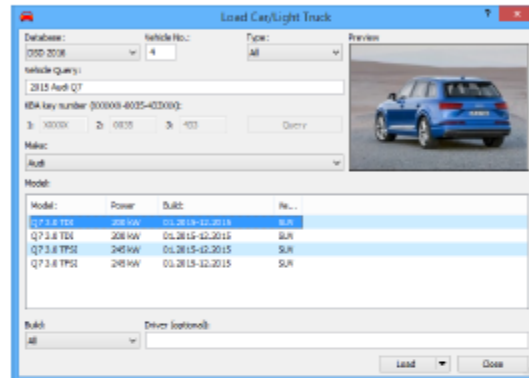
Some notes from the manual regarding the Vehicle Database:

4.2.1.1 Vehicle Database



This tool is for loading vehicles contained in a database. It brings up a vehicle database dialog box, which lists vehicles included in the database.

☛ All databases must be in the same directory, and the DSD ((C:/Program Files (x86)/PCCrashXX/specs/DSD XX.db) has to be selected in the <File> <Options> – Directories Car Database box. Otherwise the symbol is grey and it is not possible to open car database.



Database

Selects the database to be used. If all databases are in the same directory, and one of them has been selected in the <File> <Options> – Directories Car Database box, then any of these databases can be selected from this drop down list.

Currently the following databases are supported:

- DSD Database (included in PC-CRASH)
- DSD Japan (included in PC-CRASH)
- KBA Database - German department for motor vehicles (included in PC-CRASH)
- Database Ing. Vyskocil (included in PC-CRASH)
- Database ADAC (included in PC-CRASH)
- Specs (North American) - Canadian Vehicle Specifications System (Transport Canada)¹:

The North American Specs database contains vehicle dimensions and weights of cars and light trucks. No power or transmission information, or motorcycle or heavier truck data is provided, as it is in some of the European databases. The difference between the selection of these is that the year selected will be the default year that the vehicle database dialog box is initially set at. In contrast to the DSD database, a vehicle is only available in the year in which it first appeared on the market.

¹WARNINGS AND DISCLAIMER - Specs VEHICLE DATABASE The "Specs" vehicle database has been developed by Transport Canada, and is supplied with their authority free of charge for the convenience of PC-Crash users.