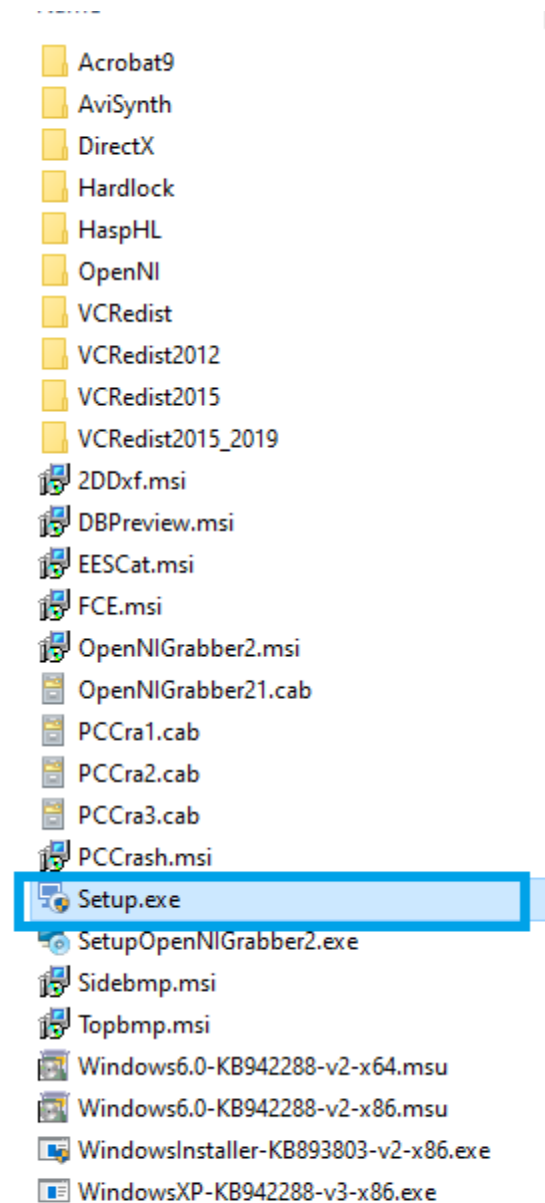


PC-Crash 13.0 Installation Guide



PC-Crash 13.0 Disk 1 Installation

Do NOT insert your dongle/hardware key at this time. Open Disk 1 folder. Double-click on the Setup application file (see screenshot below)



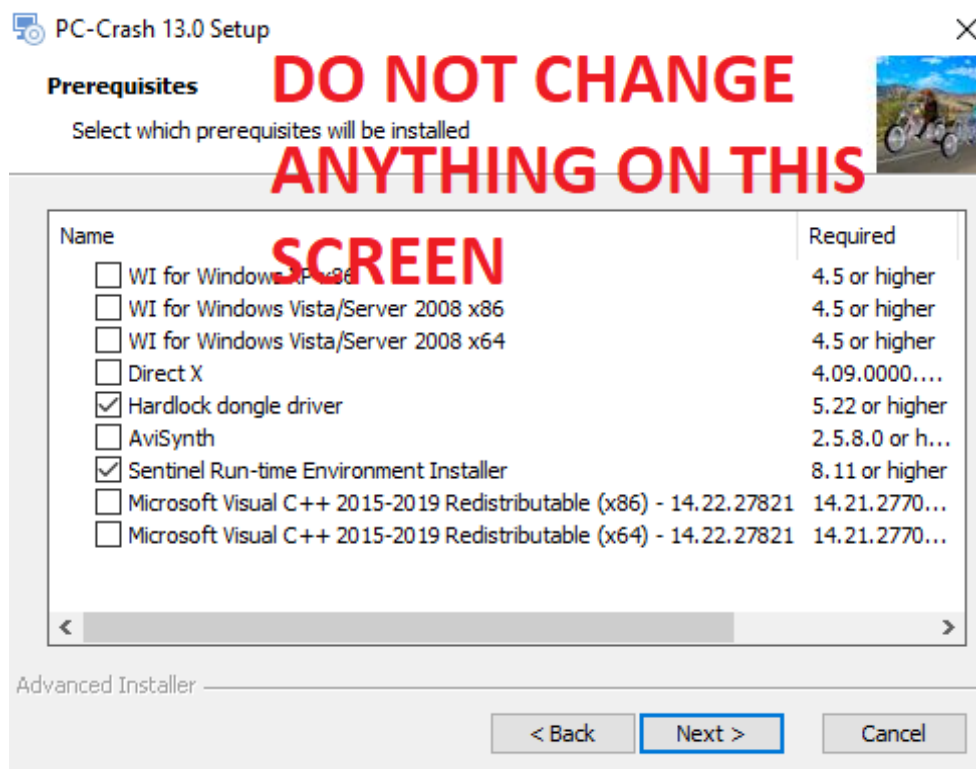
Prerequisites

At this time, setup will determine whether any prerequisites that are needed to run PC-Crash 13.0 are missing. A window named "Welcome to the Prerequisites Setup Wizard" (see below) will appear if necessary.



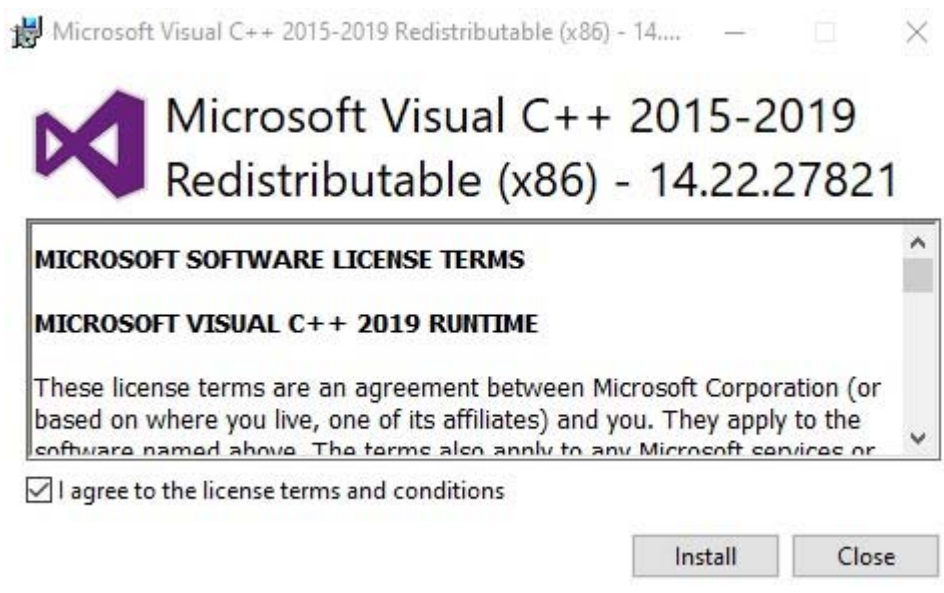
Select Next if this window appears. Another window will appear with some checkboxes filled, some empty.

PC-Crash setup will determine which prerequisites are missing on your computer. Please do not uncheck/check additional boxes.



Microsoft Visual C++

Most commonly, the x86 and x64 Microsoft Visual C++ Redistributables will need to be installed. Please install both the x86 and x64 versions.



Microsoft Visual C++ 2015-2019 Redistributable (x86) - 14....



Microsoft Visual C++ 2015-2019 Redistributable (x86) - 14.22.27821

Setup Successful

Close

Microsoft Visual C++ 2015-2019 Redistributable (x64) - 14....



Microsoft Visual C++ 2015-2019 Redistributable (x64) - 14.22.27821

MICROSOFT SOFTWARE LICENSE TERMS

MICROSOFT VISUAL C++ 2019 RUNTIME

These license terms are an agreement between Microsoft Corporation (or based on where you live, one of its affiliates) and you. They apply to the software named above. The terms also apply to any Microsoft services or

☒ I agree to the license terms and conditions

Install

Close

Microsoft Visual C++ 2015-2019 Redistributable (x64) - 14....



Microsoft Visual C++ 2015-2019 Redistributable (x64) - 14.22.27821

Setup Successful

Close

After the prerequisites are installed, PC-Crash 13.0 installation will begin.

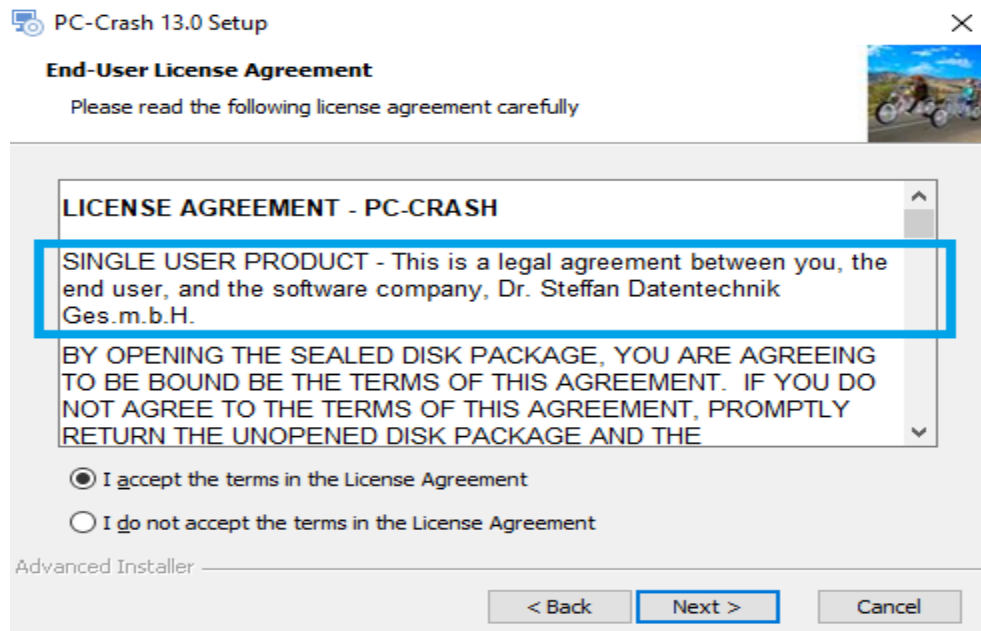
Disk 1 installation continued

Select Next to continue with installation.

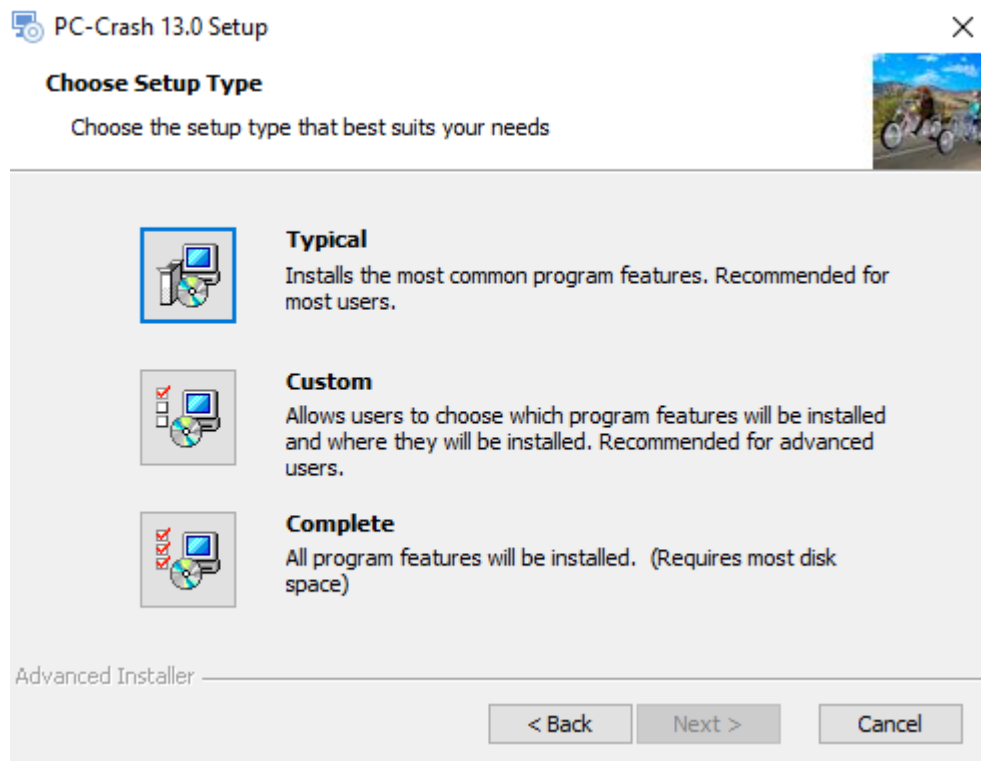


End-User License Agreement

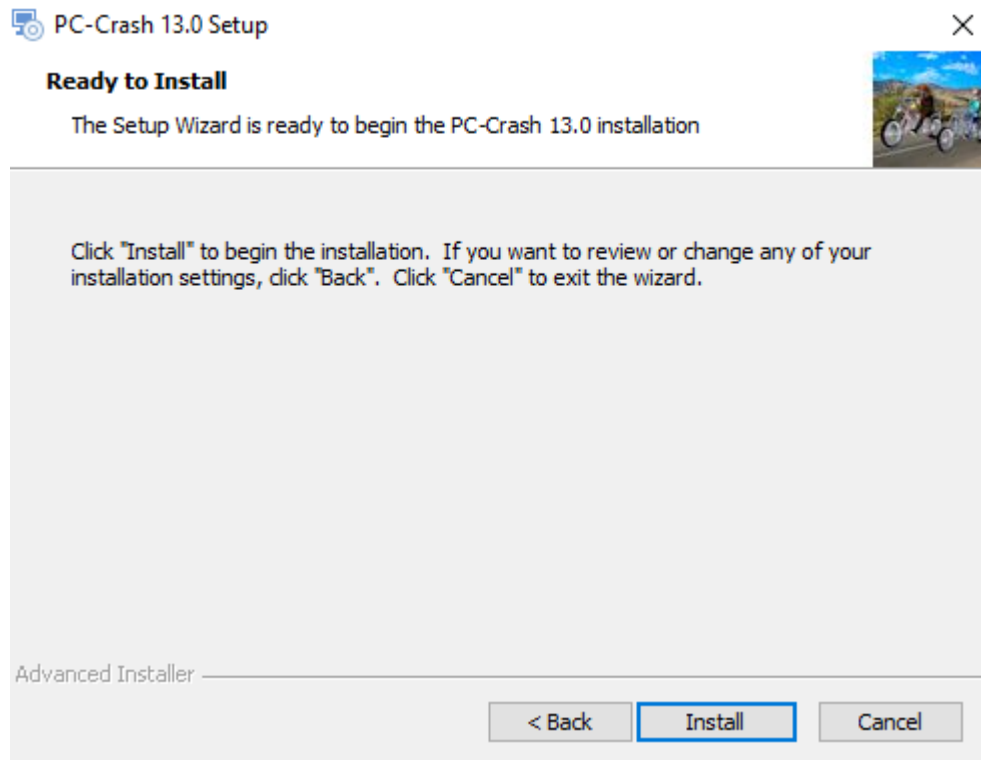
You must accept the terms in the License Agreement in order to proceed with installation. Note: PC-Crash is licensed by single user hardware lock. Licensing does not support remote authentication.



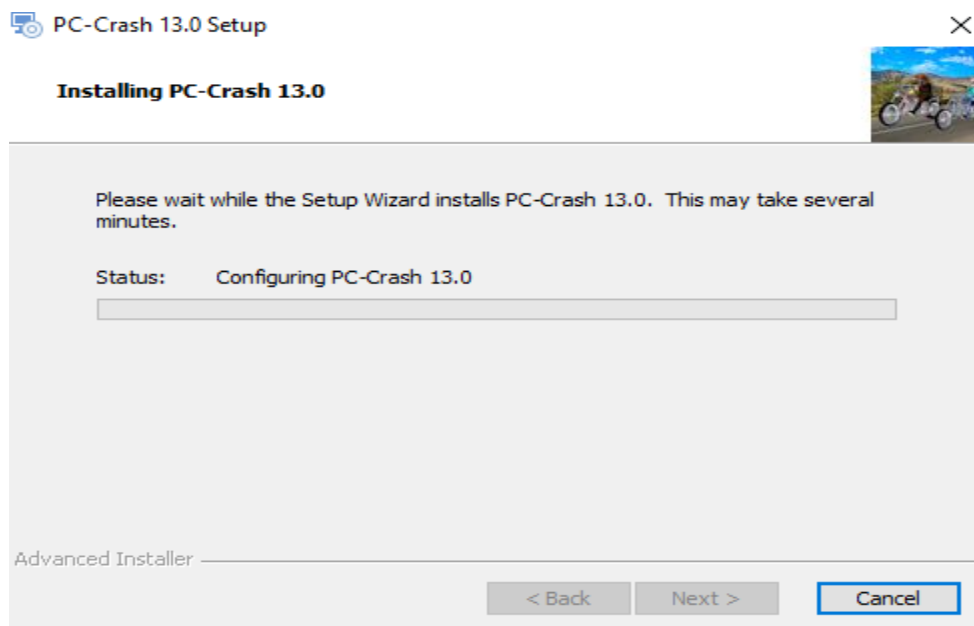
Please choose setup type



After selecting setup type, select Install.



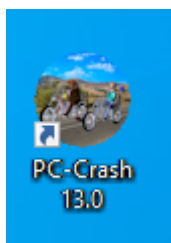
Let the installer run. During installation, a second window may open as different components are installed. The second window will close automatically.



Once the installation is complete, the window below will appear. Select Finish to exit.



The PC-Crash 13.0 desktop icon will be visible at this point.

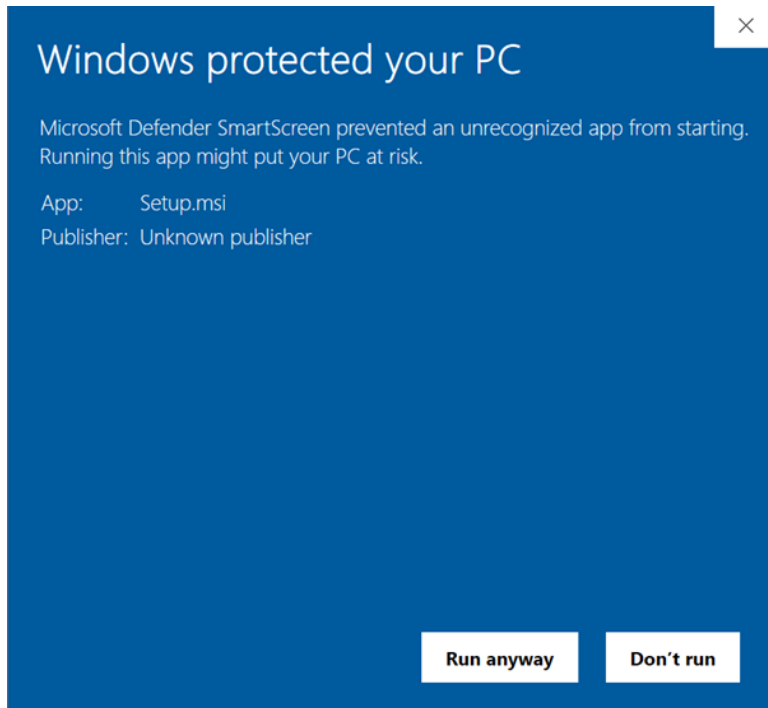


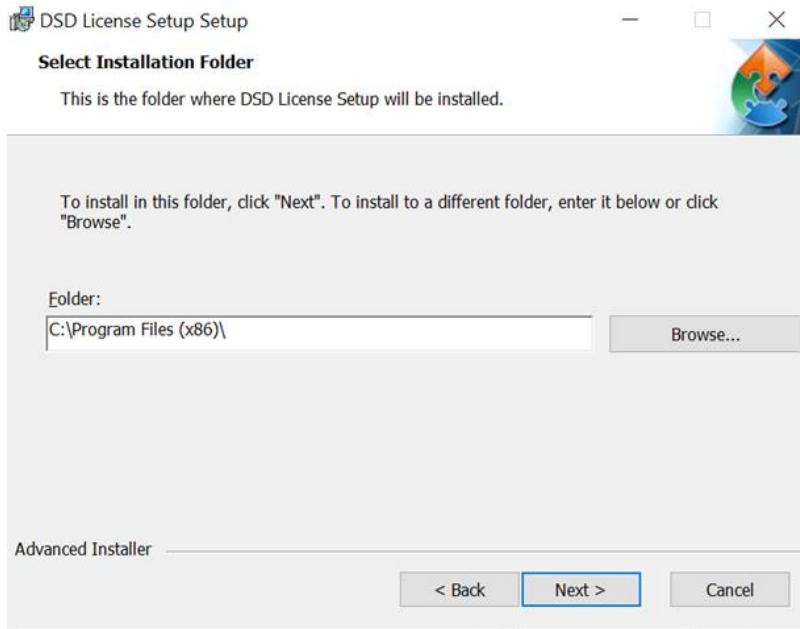
License Files

You must install the license files found in the 'License Files' folder to your computer.

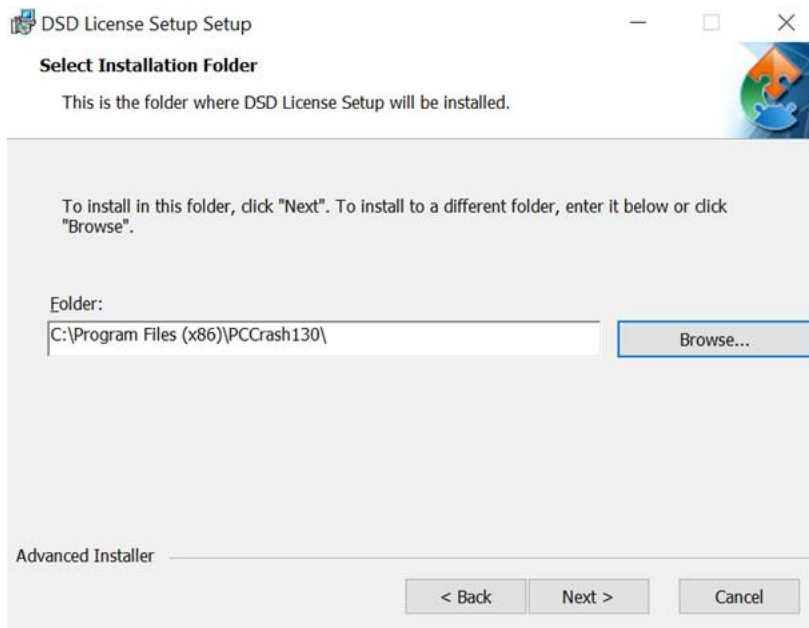
- 1. DISK1
- 2. DirectX Vehicles
- 3. License Files

Run "Setup.msi", allowing the Windows Defender to run the file if asked.





Browse to your PC-Crash folder if needed.



Complete setup. PC-Crash should now run in licensed mode.

If PC-Crash still comes up Demoversion, and your hardware lock is lit, you can download the most recent license files at pc-crash.com.

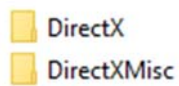
DirectX Vehicles Installation

DirectX (1 of 2)

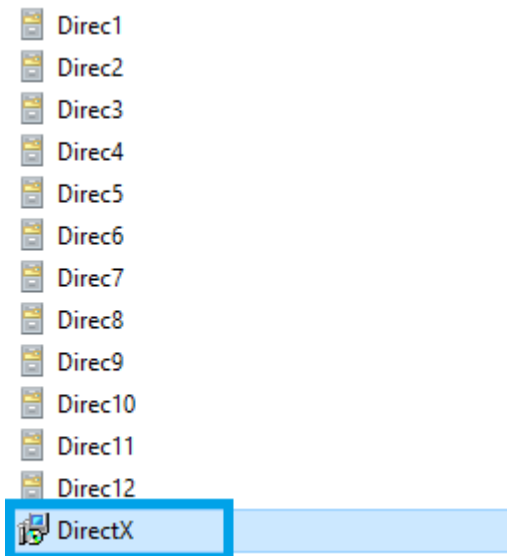
Navigate to the DirectX vehicles folder and double-click on it.



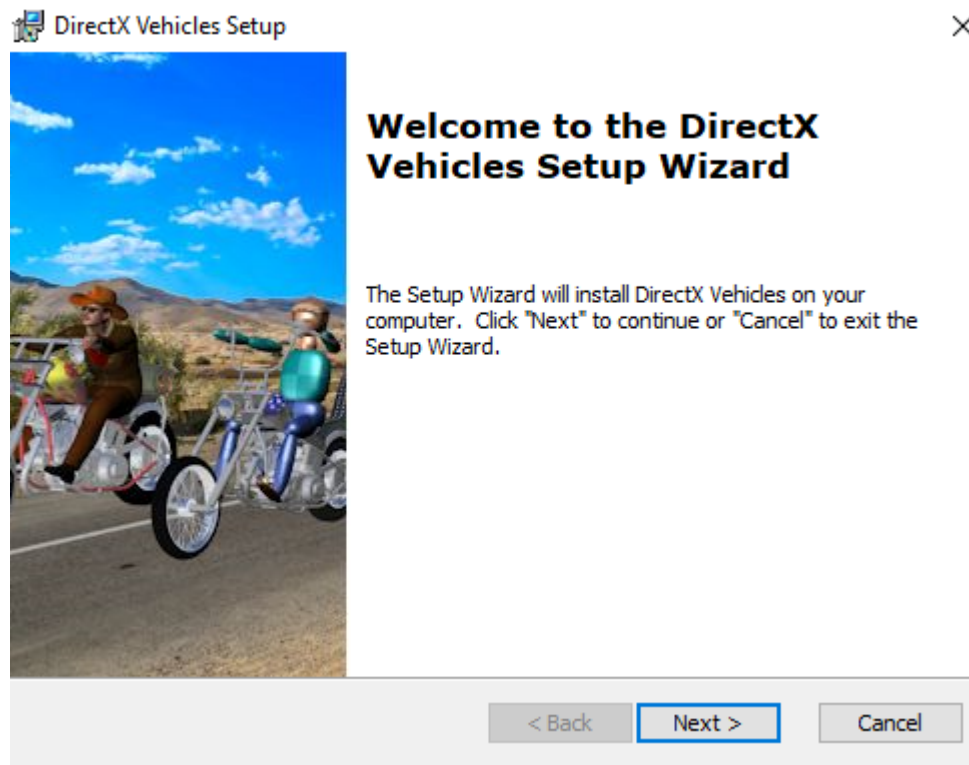
Then double-click the DirectX folder.



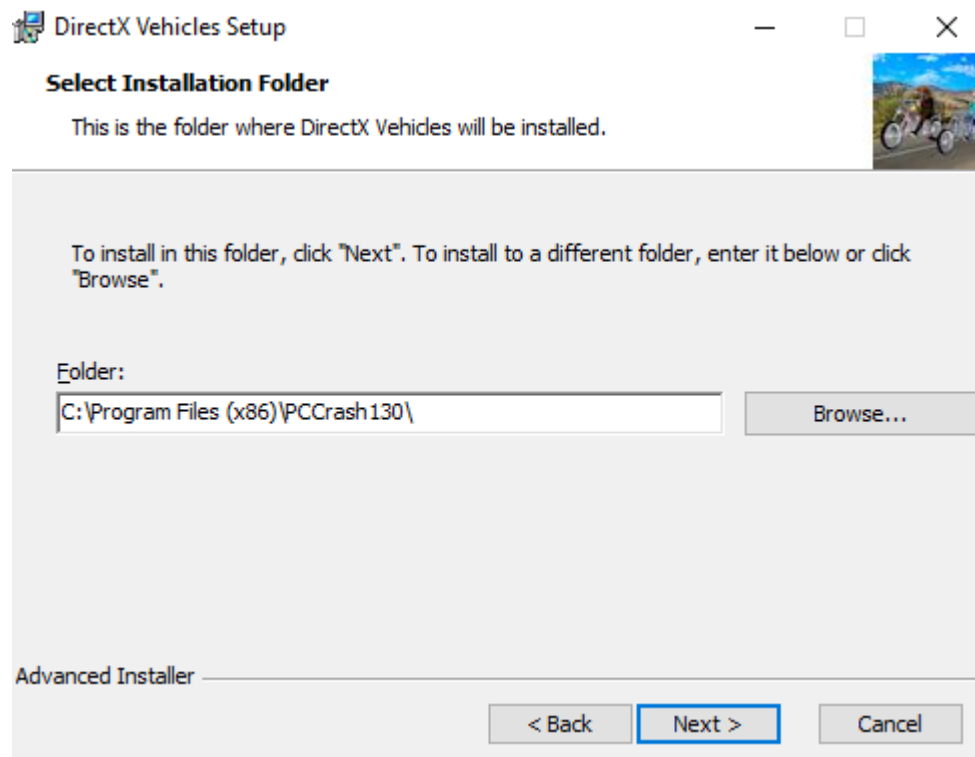
Double-click the Windows Installer file 'DirectX' (see screenshot below) to begin the DirectX Vehicles Setup Wizard.



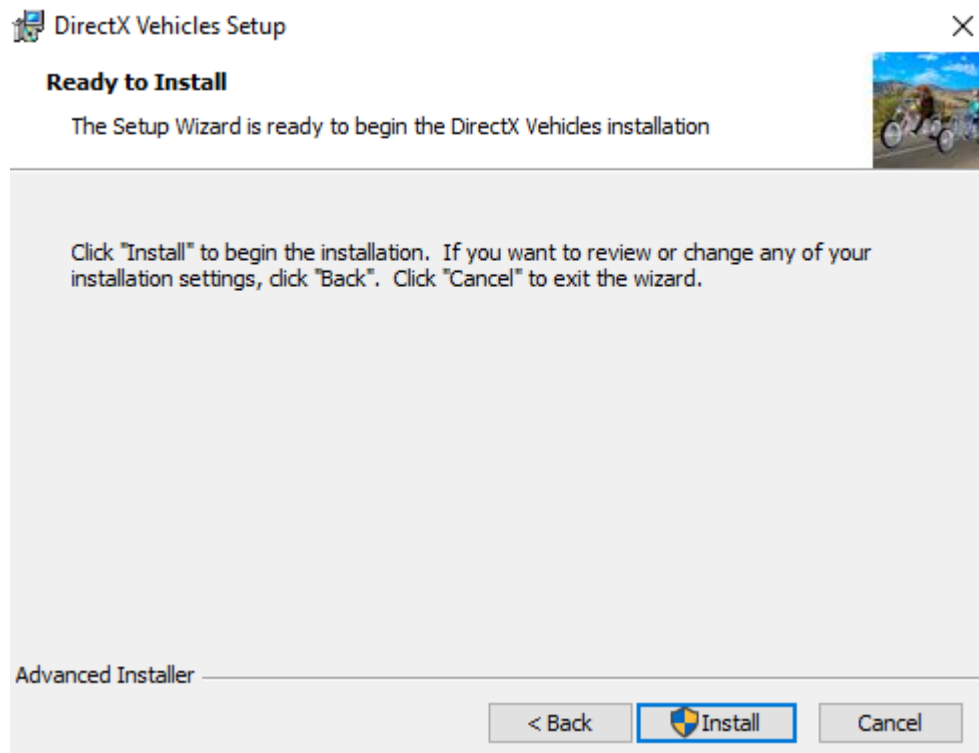
Select Next to continue.



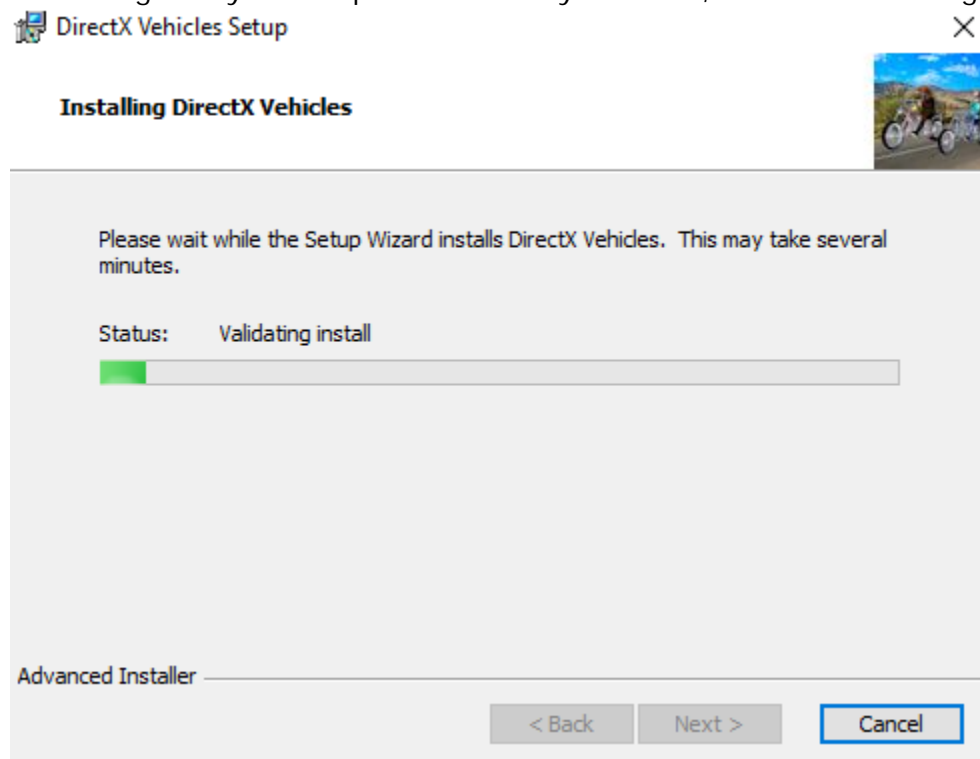
Select Next to continue.



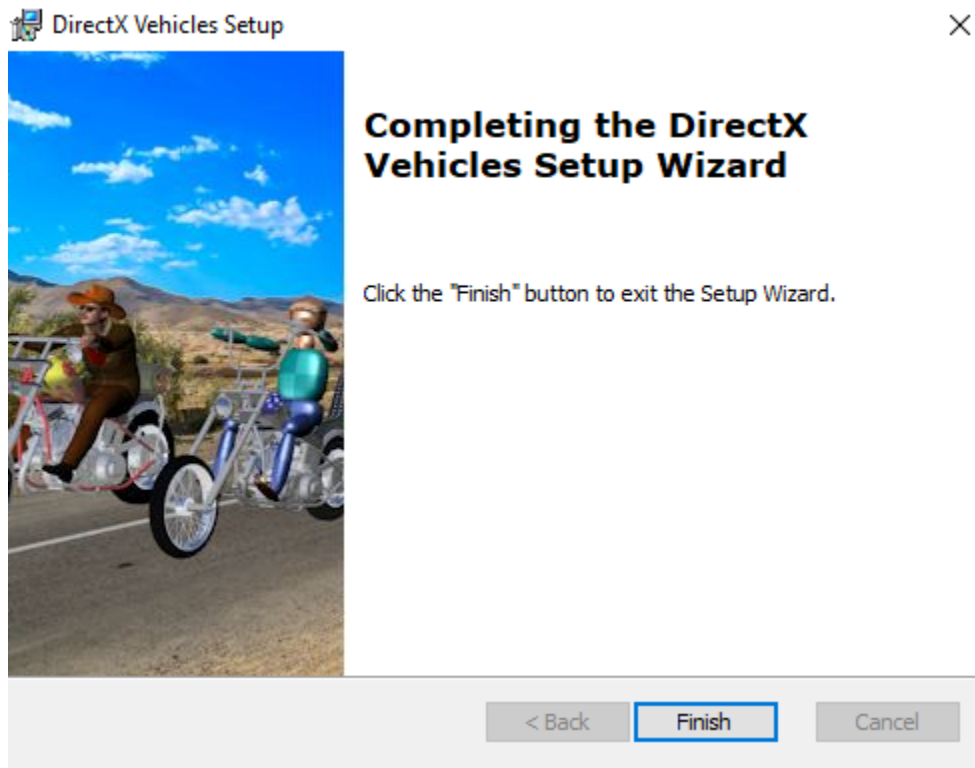
Select Install.



A window may pop up asking 'Do you want to allow this app from an unknown publisher to make changes to your computer?' Select "yes". Then, installation will begin.

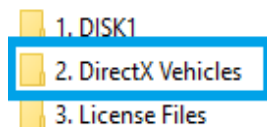


Select Finish to exit the Setup Wizard.

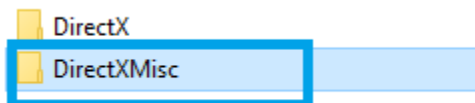


DirectX (2 of 2)

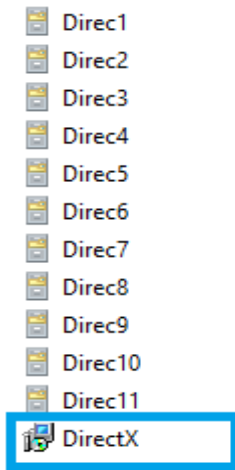
Navigate to the DirectX Vehicles folder and double-click to open.



Then double-click the DirectXMisc folder.

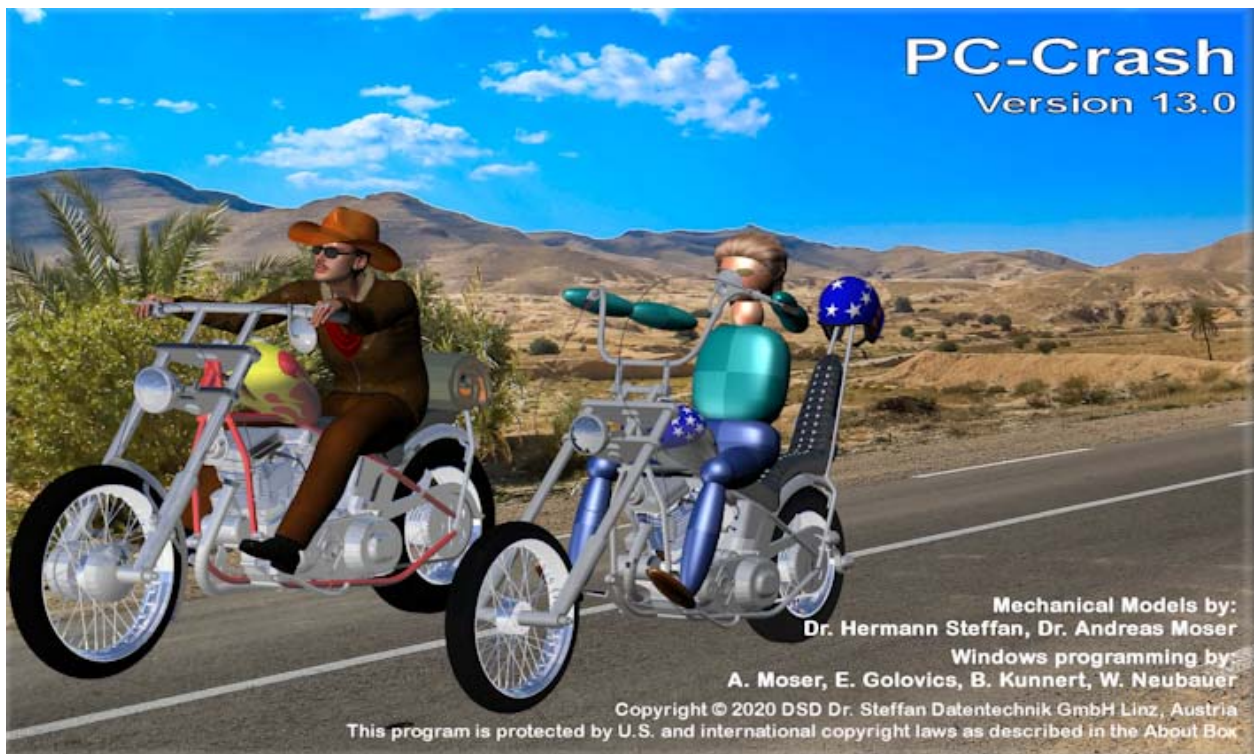


Double-click the Windows Installer file DirectX (see screenshot below) to begin the DirectX Vehicles Setup Wizard. The installation process is identical to the DirectX (1 of 2) setup above.



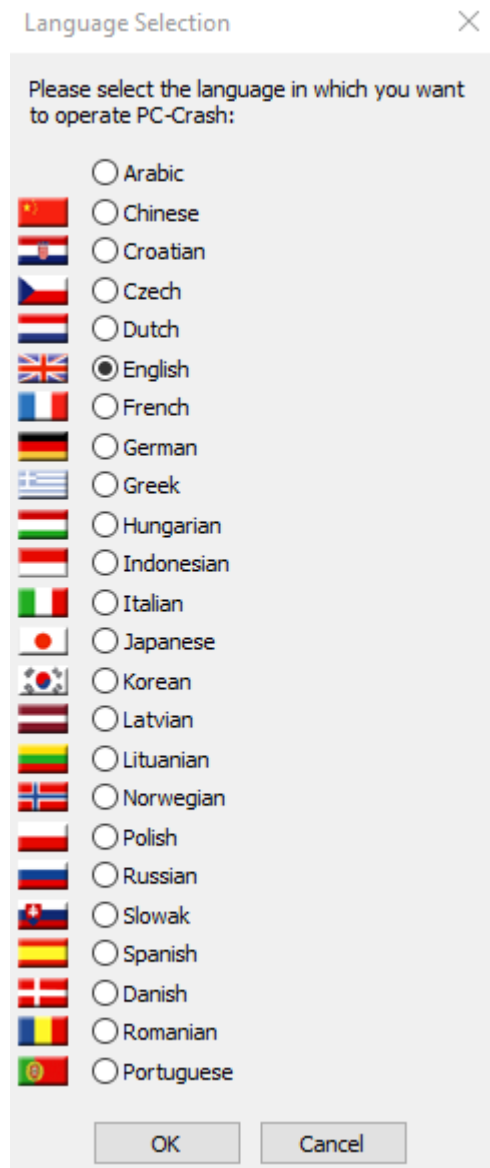
Once installation of 'DirectXMisc' is complete, PC-Crash has now been completely installed including DirectX vehicle shapes. Insert your dongle/hardware key to run PC-Crash. PC-Crash will open in demo version if a dongle/hardware key is not inserted.

Run PC-Crash

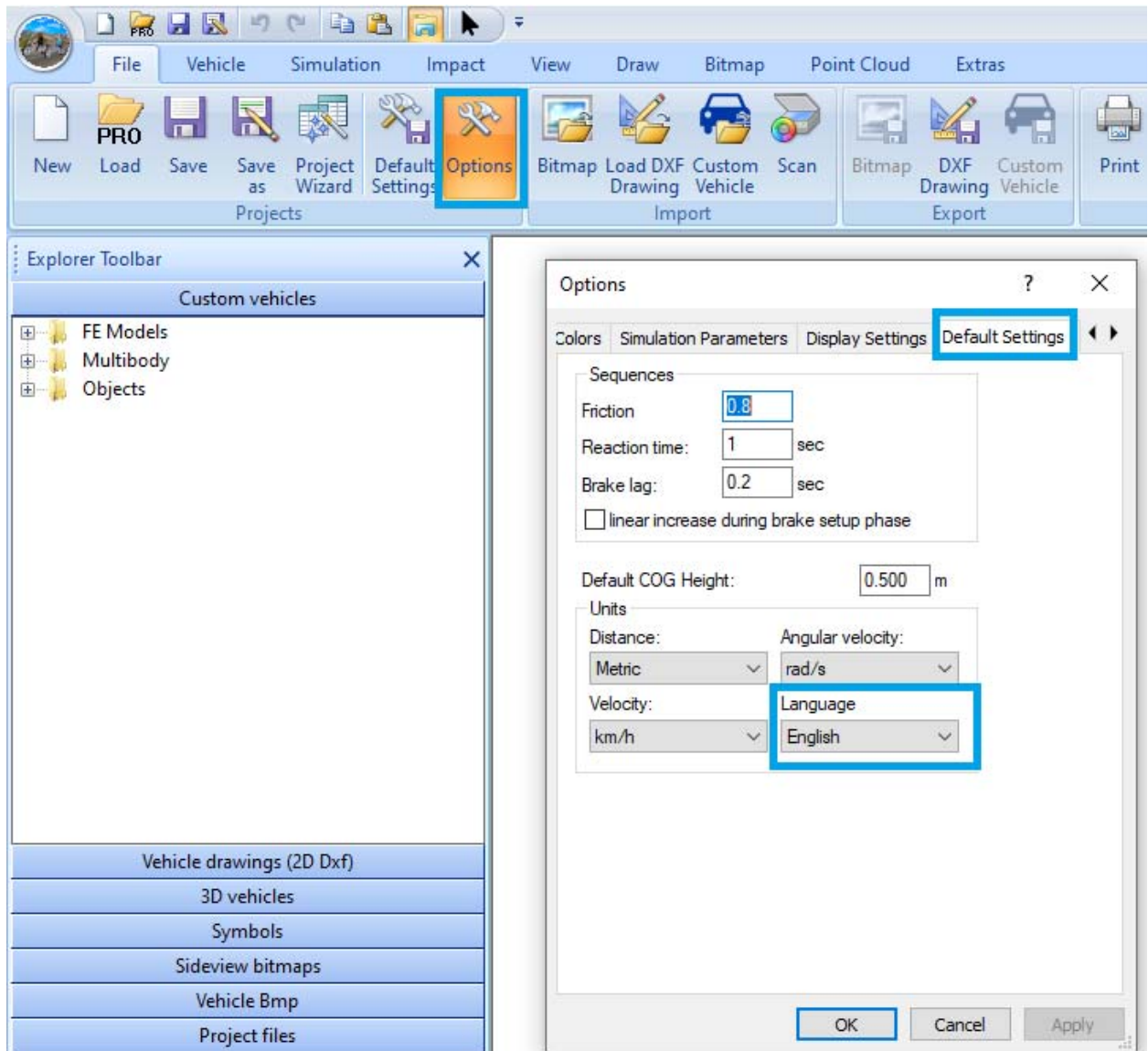


Language

The language selection window will appear the first time you launch PC-Crash.
Choose language accordingly.

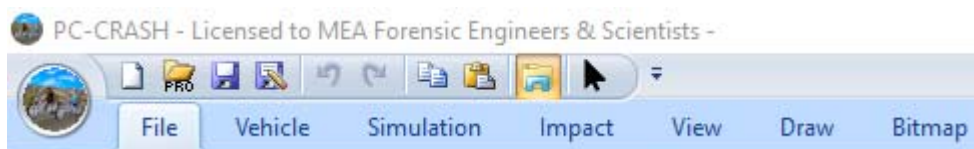


If you need to change the language later, this setting is found under Options > Default Settings (as shown below).



License verification

When PC-Crash is running (and your dongle/hardware key is inserted), your company name will appear at the top of the window.



If your company name does not appear at the top and says "Licensed to Demoversion", please double check that you have saved the license files to the 'PCCrash130' folder on your computer as noted on page 11.

Also check if your dongle/hardware key is illuminated and/or in a working USB port. Preferably use a port directly on the computer and not on a hub or extension cable.

Still running in "Demoversion"? Please see our FAQ page on our website (www.pc-crash.com) for further troubleshooting, or you can reach us at 1-877-855-5322 or 1-800-565-3040, or by email:

PC-Crash Support:

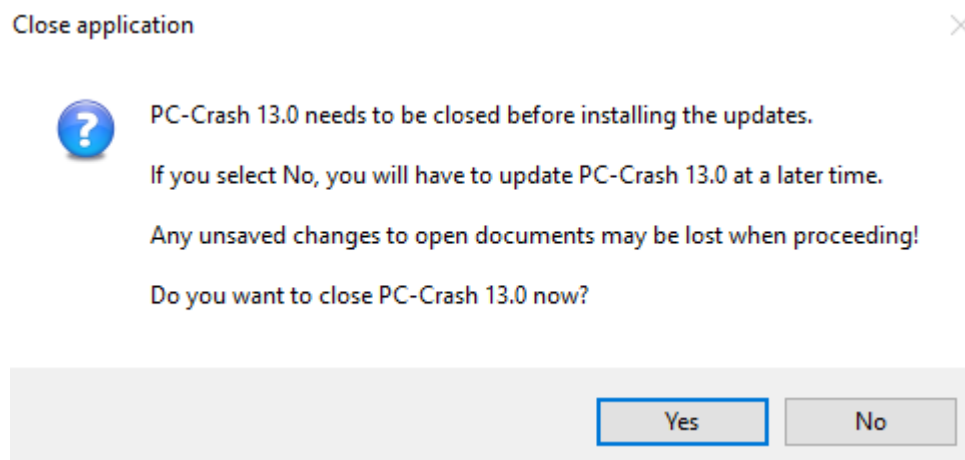
support@pc-crash.com

PC-Crash Updater

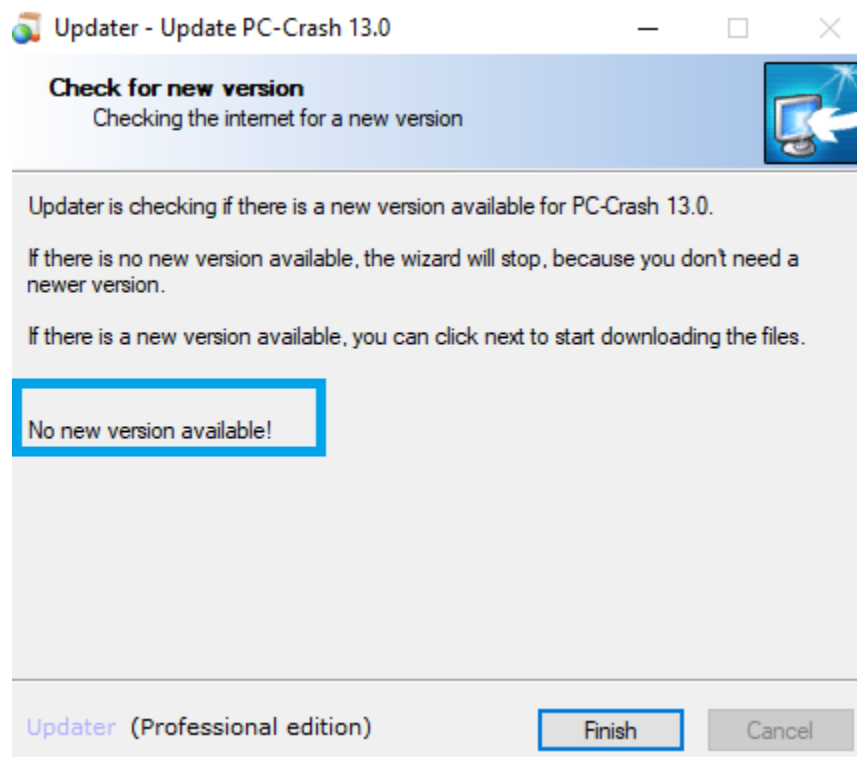
After launching PC-Crash, you may also have another pop-up window "updater.exe" requesting to make changes to computer. At start-up, PC-Crash will check for updates. (Please note this updater checks for updates for the current version of PC-Crash; this is not the process to upgrade to a new software version)



If you select "Yes" to make changes, PC-Crash will check for updates and notify you before installing updates. Once the update check is complete, you will see the following window if there are no new updates:

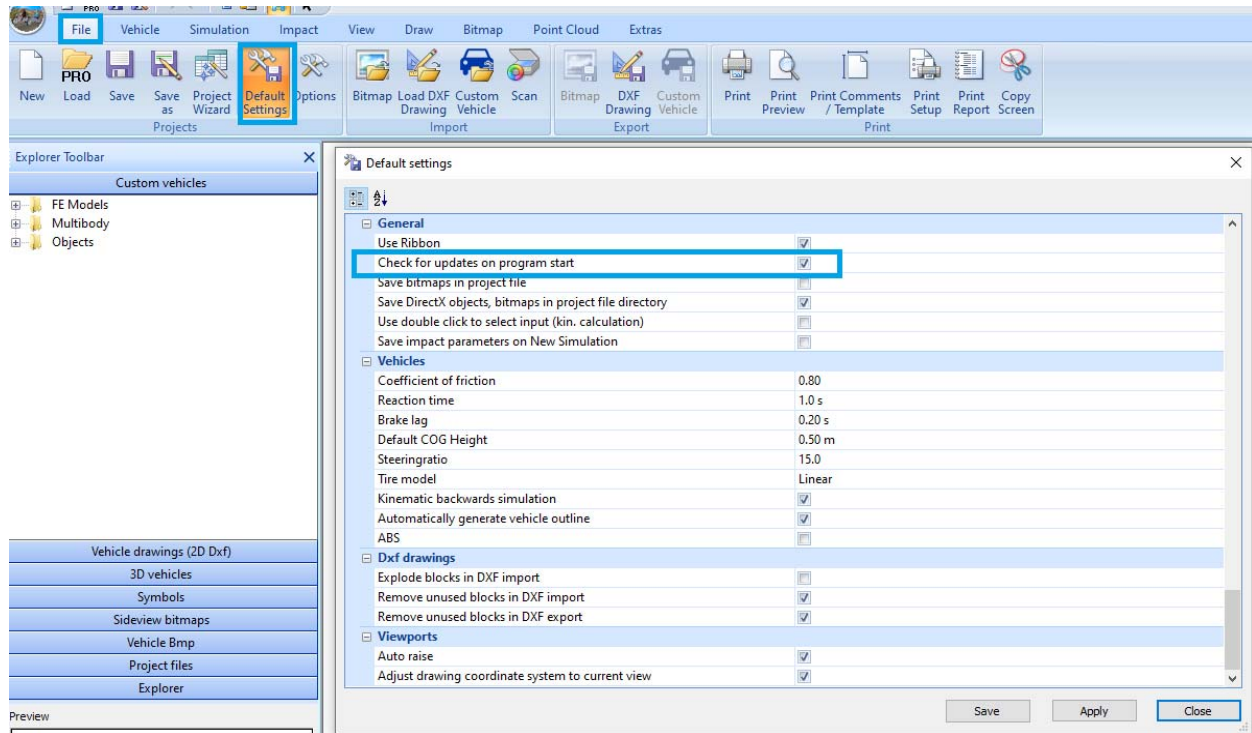


Or this window if an update is available:



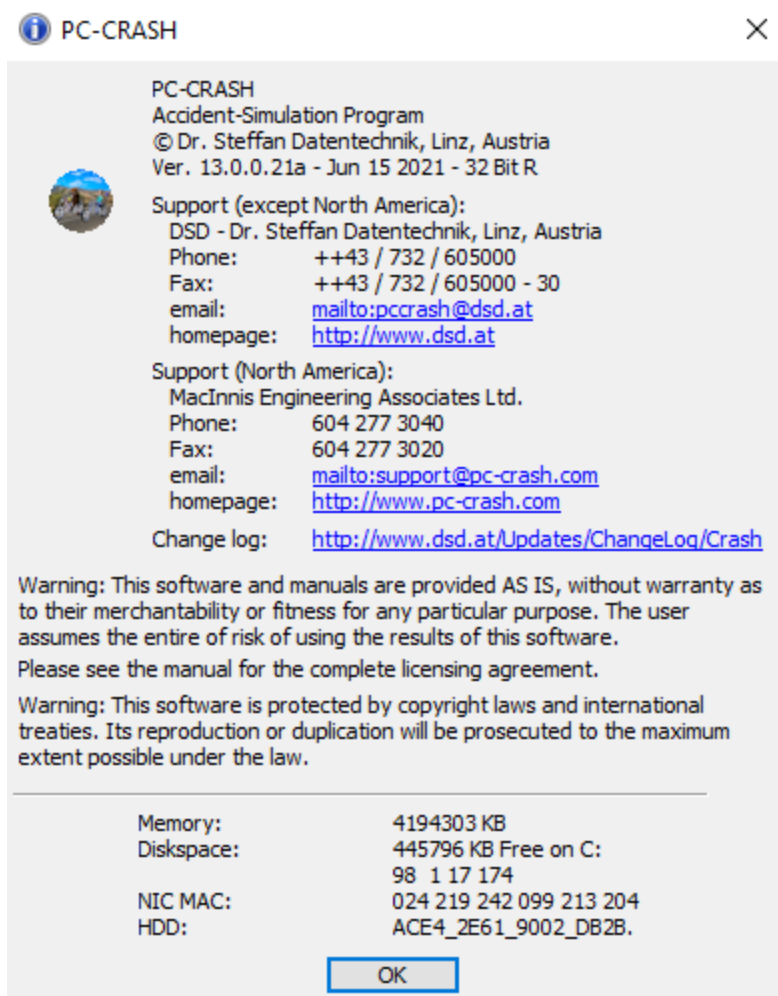
Sometimes the updater can slow down launching of PC-Crash. If you would rather not check for updates on program start, or you do not have administrator privileges on your computer (speak with your IT department on what permission settings you have), you can turn this feature off.

Once PC-Crash is open, go to “Default Settings” and scroll down until you find “Check for updates on program start”. You may need to expand menus if you cannot find this option. Select or de-select the check box depending on your preference. Hit Apply and Save, then close the window.



If you would like to see which version number you are operating, navigate to “About PC-Crash” which is found under the “Extras” tab. Blue box below shows the version number; blue line shows the number of the dongle inserted at time of operation.



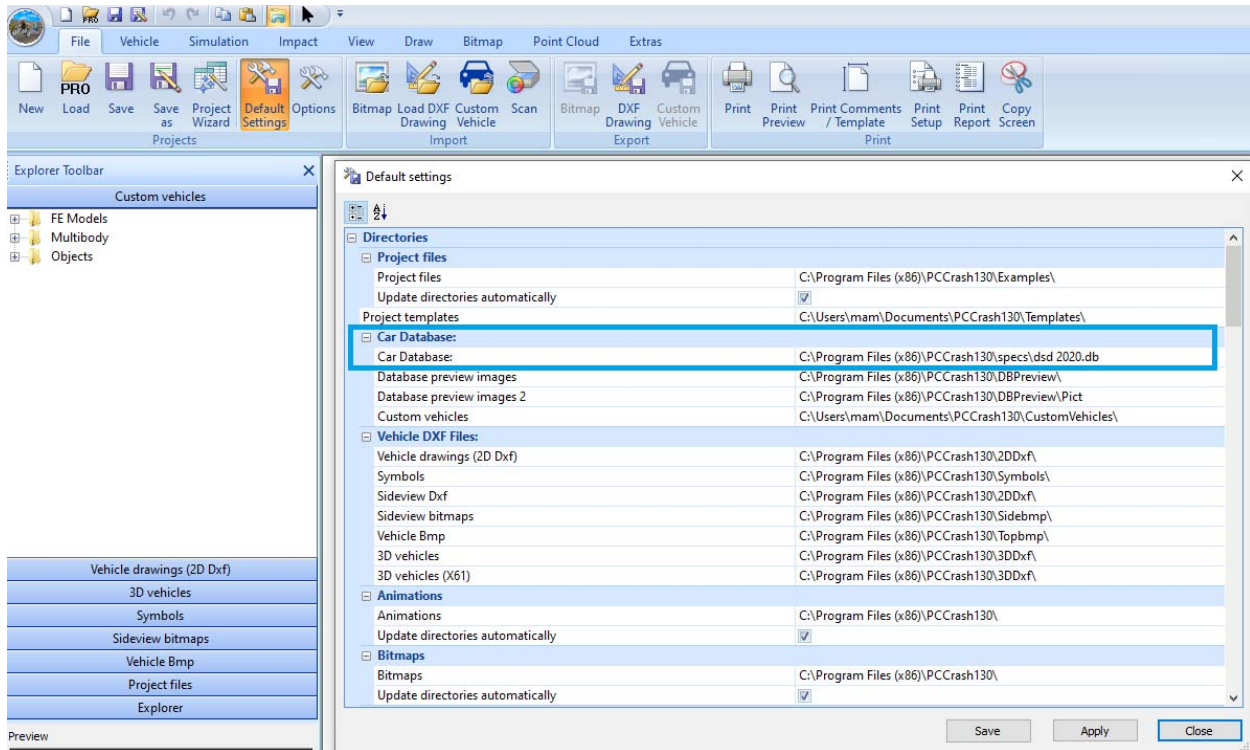


At any time, you can check for updates manually by navigating to the “Extras” tab > “Check for Updates”



Vehicle Database

To access North American vehicles, go to “Default Settings” and change the vehicle database directory to the SPECS folder in your PC-Crash program folder.



To update the vehicle database to include the latest model year

Please visit our website: [PC-Crash FAQ](#) and navigate to the following:

🔊 **My Vehicle database doesn't have the latest model year.**

Download this SPECS update, and unzip to the specs subfolder in your PC-Crash program folder.

Select “Download this SPECS” to download the update.






























Unzip the file and move it to the ‘specs’ subfolder in your PC-Crash program folder.

» OS (C:) » Program Files (x86) » PCCrash130

Name

2DDxf
3DDxf
ActiveSafety
aladdin
AvsP
CustomVehicles
DBPreview
DongleDriverNT
EESCat
EESCNN
Engauge Digitizer
Examples
Gmsh
Help
Lng
Macros
OnlineDocu
ShellExtension
Sidebmp
Sky Textures
specs
Symbols
Templates
Tools
Topbmp
Translations
WinwordVorlagen
3-2-2T.DXF
80-4.DXF

› OS (C:) › Program Files (x86) › PCCrash130 › specs

Name	Date modified
 SPE1994.DBF	6/15/2021 1:01 PM
 SPE1995.DBF	6/15/2021 1:01 PM
 SPE1996.DBF	6/15/2021 1:01 PM
 SPE1997.DBF	6/15/2021 1:01 PM
 SPE1998.DBF	6/15/2021 1:01 PM
 SPE1999.DBF	6/15/2021 1:01 PM
 SPE2000.DBF	6/15/2021 1:01 PM
 spe2001.dbf	6/15/2021 1:01 PM
 SPE2002.DBF	6/15/2021 1:01 PM
 spe2003.dbf	6/15/2021 1:01 PM
 spe2004.dbf	6/15/2021 1:01 PM
 SPE2005.DBF	6/15/2021 1:01 PM
 spe2006.dbf	6/15/2021 1:01 PM
 spe2007.dbf	6/15/2021 1:01 PM
 spe2008.dbf	6/15/2021 1:01 PM
 spe2009.dbf	6/15/2021 1:01 PM
 SPE2010.DBF	6/15/2021 1:01 PM
 SPE2011.DBF	6/15/2021 1:01 PM
 spe2012.dbf	6/15/2021 1:01 PM
 spe2013.dbf	6/15/2021 1:01 PM
 spe2014.dbf	6/15/2021 1:01 PM
 spe2015.dbf	6/15/2021 1:01 PM
 spe2016.DBF	6/15/2021 1:01 PM
 spe2017.DBF	6/15/2021 1:01 PM
 spe2018.DBF	6/15/2021 1:01 PM
 spe2019.dbf	6/15/2021 1:01 PM
 spe2020.dbf	6/15/2021 1:01 PM
 spe2021.dbf	6/15/2021 1:01 PM
 Vyskocil.dbf	1/23/1997 2:15 PM

Contact Information

Phone:

1-800-565-3040

1-877-855-5322

Or contact us via email:

PC-Crash Support

support@pc-crash.com

PC-Crash Courses

courses@pc-crash.com

General Inquiries

info@pc-crash.com

Want to ensure you hear all the latest news regarding PC-Crash? Join our mailing list and you will be notified of new courses/workshops, promotions, and new releases. Emails will come from our general email: info@pc-crash.com

Click [HERE](#) to join our mailing list.