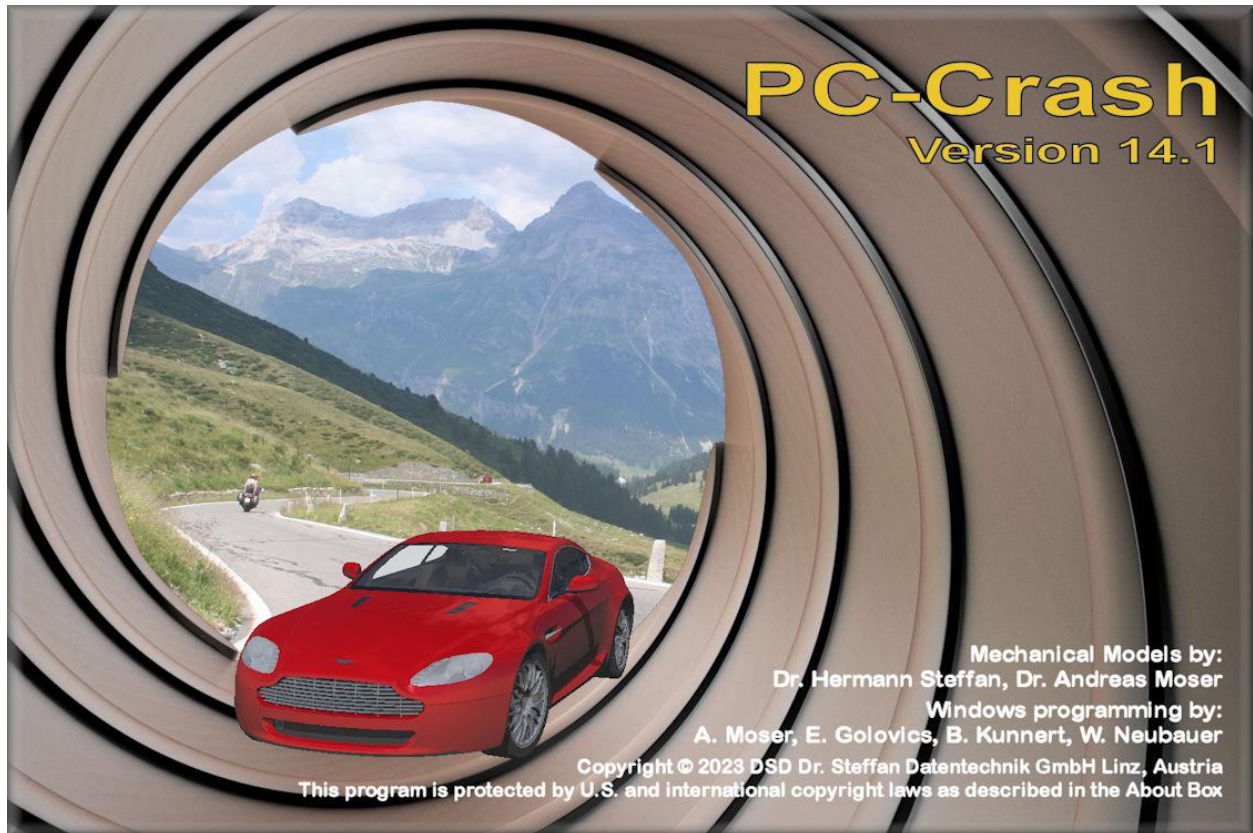
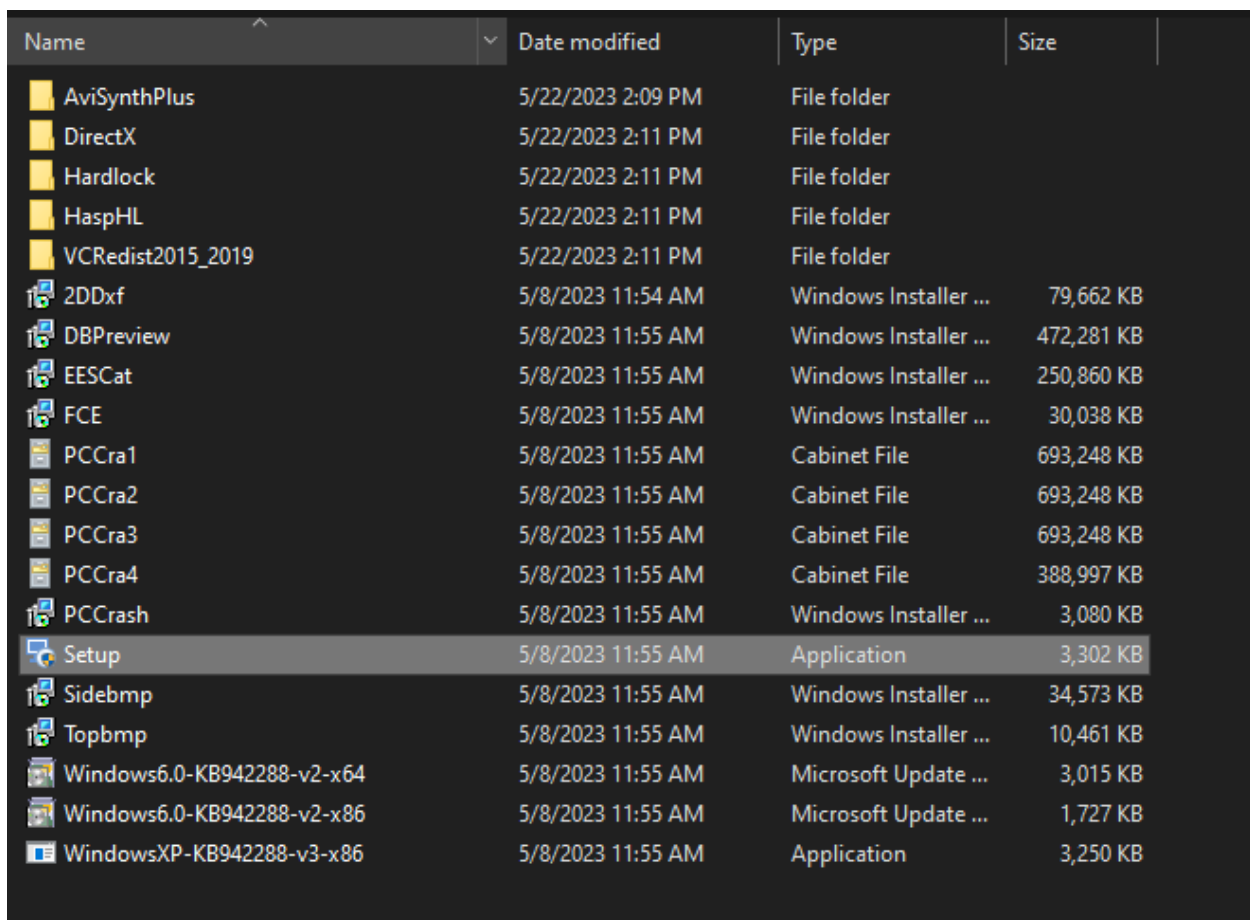
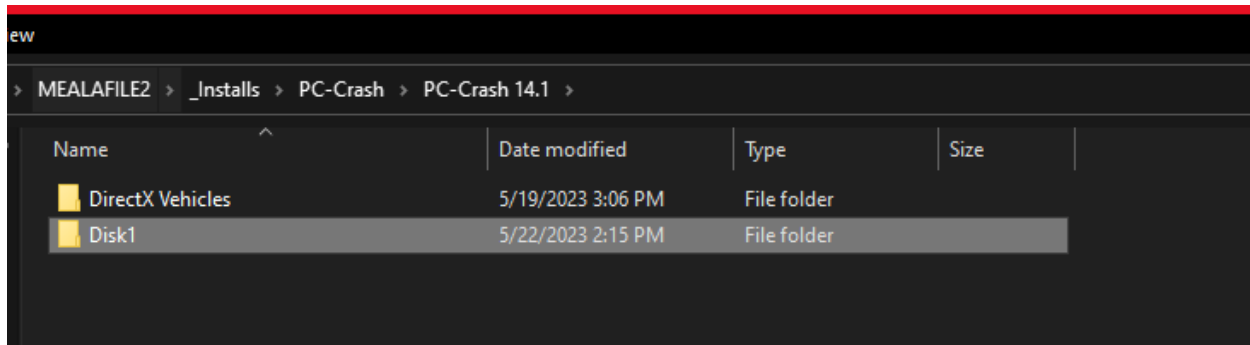


PC-Crash 14.1 Installation Guide



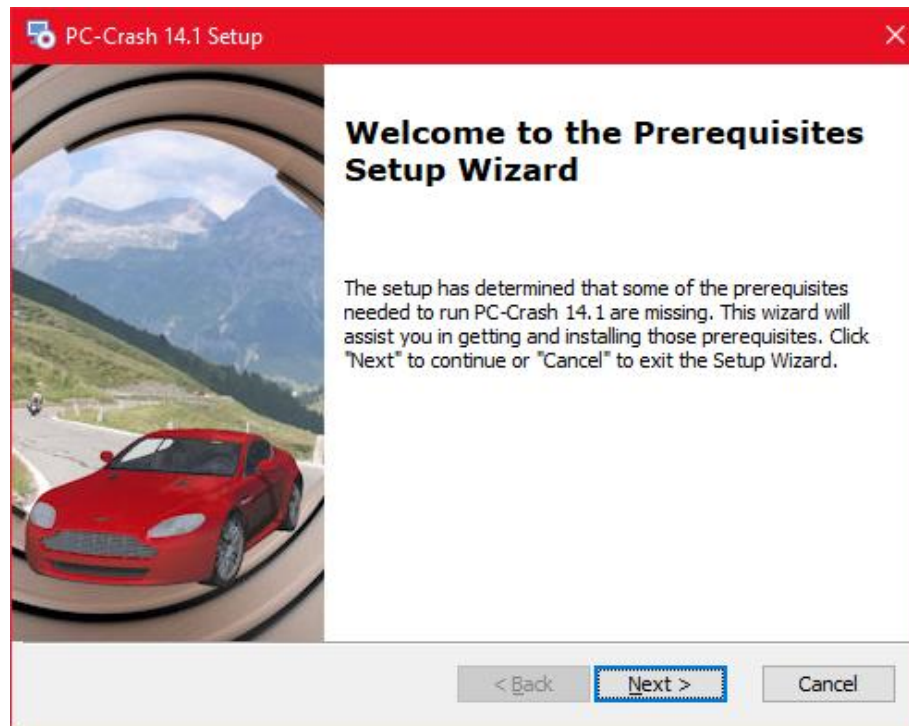
PC-Crash 14.1 Disk 1 Installation

Before you begin, DO NOT insert your dongle/hardware key. Navigate to where you extracted the installation files. Open the Disk 1 folder and run the Setup.exe file (see screenshots below). If you get a User Account Control message, select Yes.

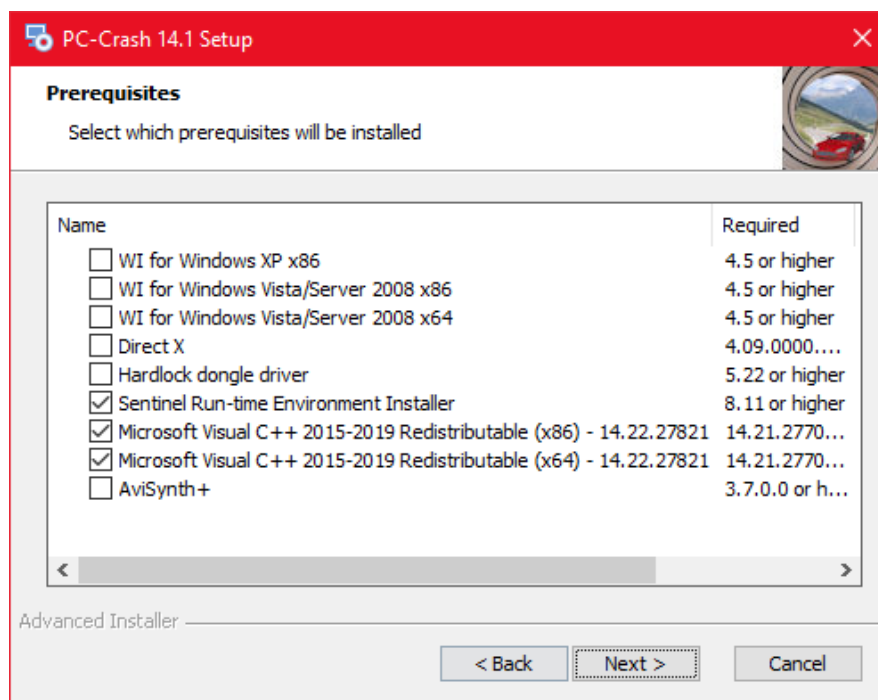


Prerequisites

If you are upgrading from a later version of PC Crash, you likely will not see this window. However, for new licenses and upgrades from older versions, there may be some prerequisites that need to be installed.



Select Next if this window appears. Another window will appear with some checkboxes filled, some empty.



If prompted, select the run option, accept the license agreement, and click through the installations for each of the dependencies.

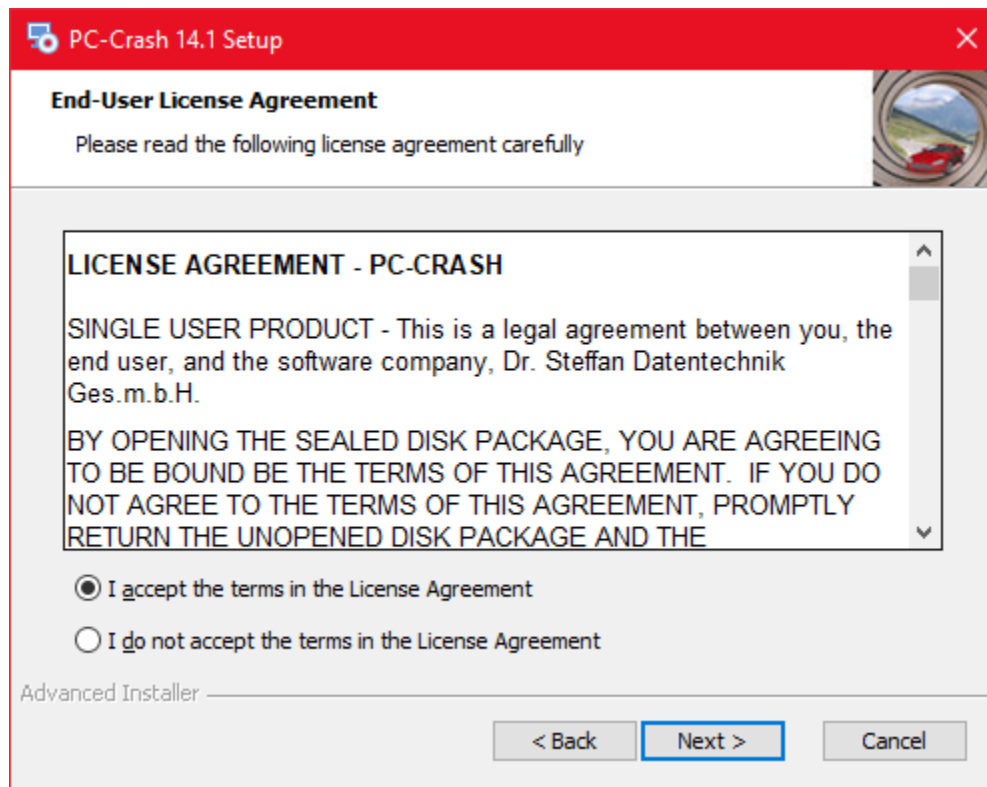
PC Crash 14.1 Setup Wizard

After the prerequisites are installed, PC-Crash 14.0 installation will begin.



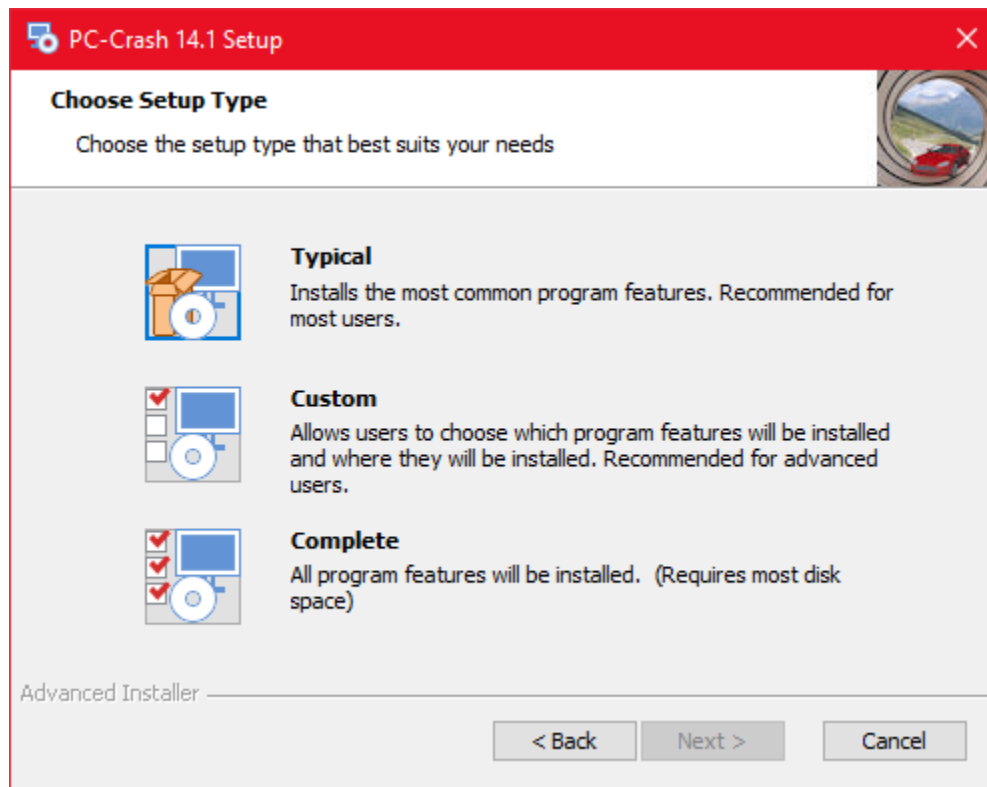
License Agreement

Select Next to view the license agreement. Accept the license agreement to continue the installation.

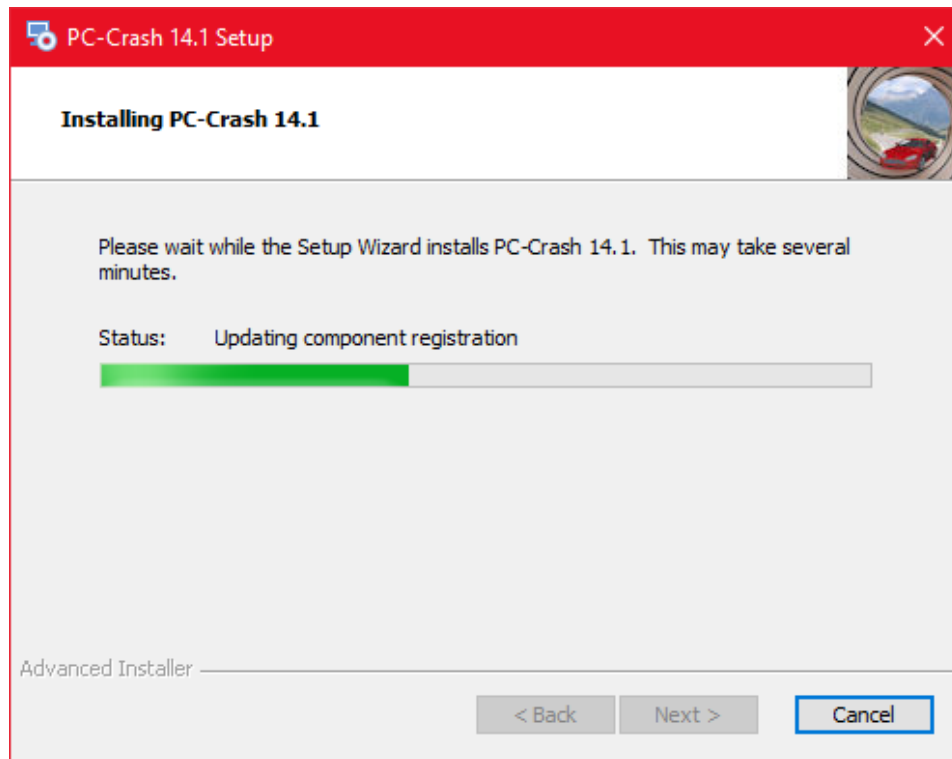


Setup Type

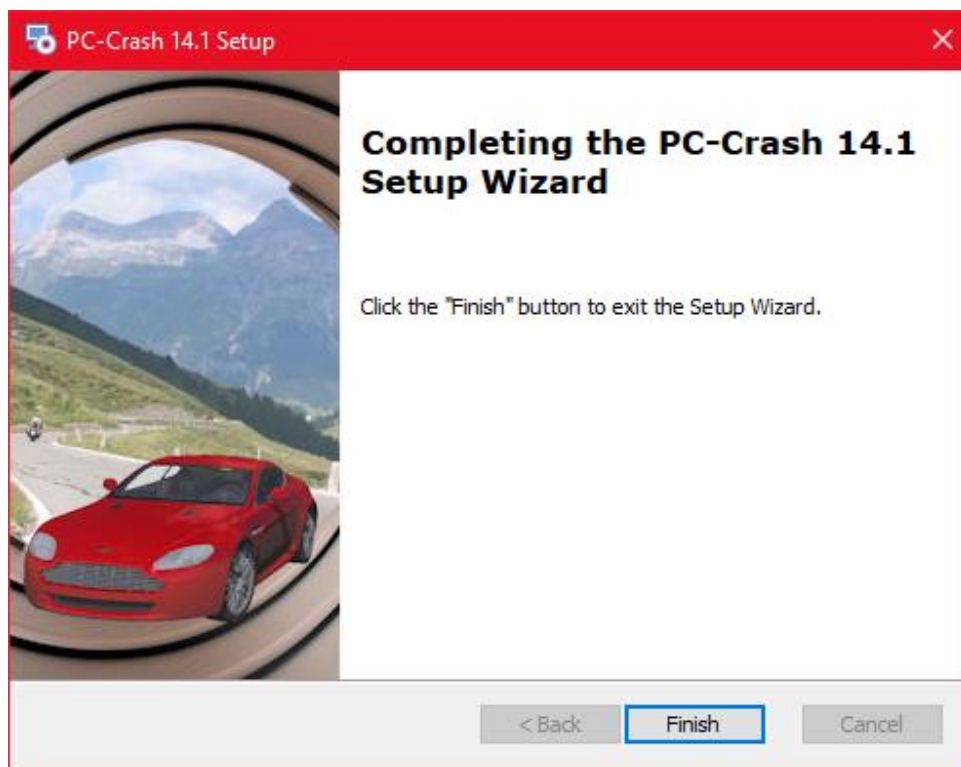
The installer will prompt you for the setup type you want to use. For most customers, the typical installation will suffice.



Let the installer run. During installation, a second window may open, as different components are being installed. The second window will close automatically.



Once the installation is complete, the window below will appear. Select Finish to exit.




The PC-Crash 14.1 desktop icon will be visible at this point. Do not open the software yet.

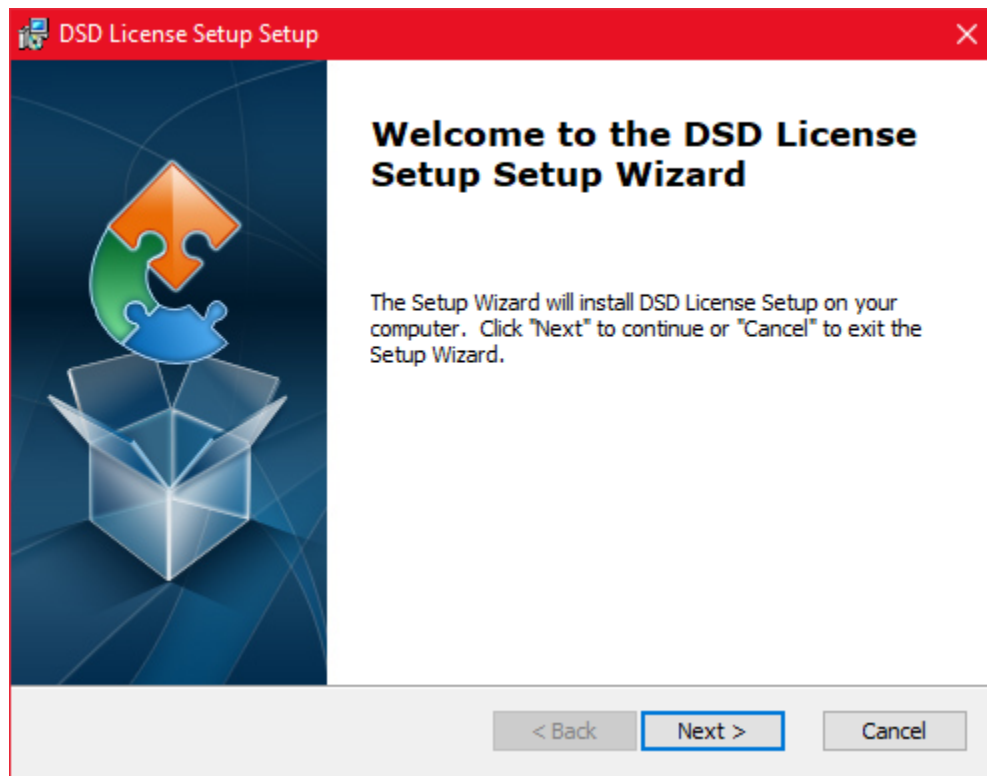


License Files

Navigate to where you saved license file download. There will be a "Setup.msi" file. If you do not see the file, please contact PC-Crash Support (support@pc-crash.com) and you will be provided it.

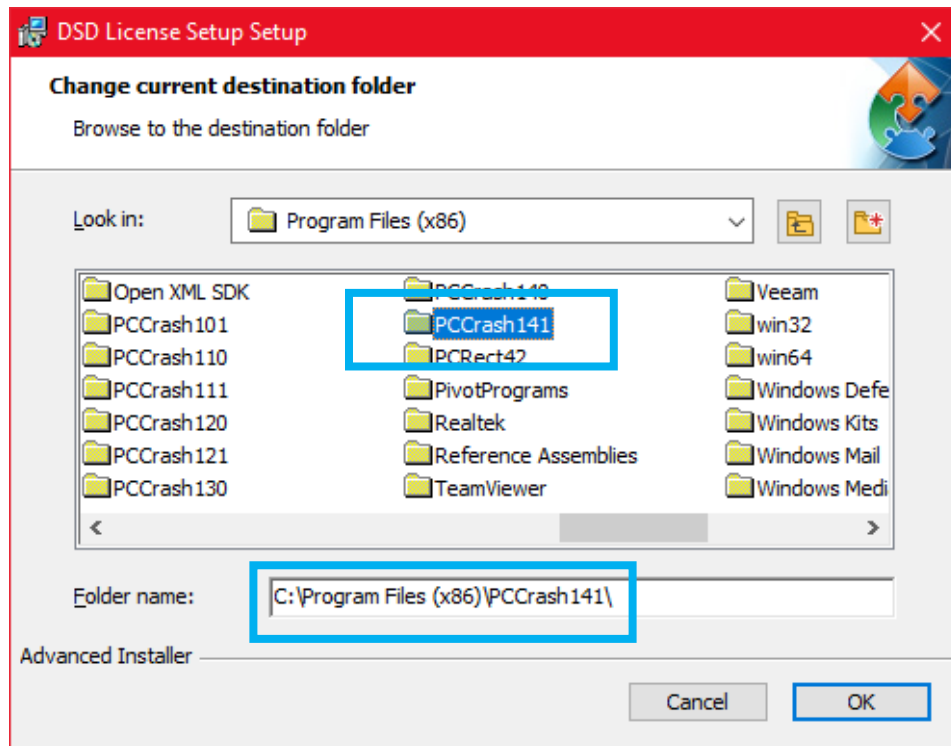
Downloads > Setup			
Name	Date modified	Type	Size
 Setup	6/12/2023 3:57 PM	Windows Installer ...	1,364 KB

Run the Setup.msi file and follow the on-screen instructions. Click "Next" when you see the setup wizard window.

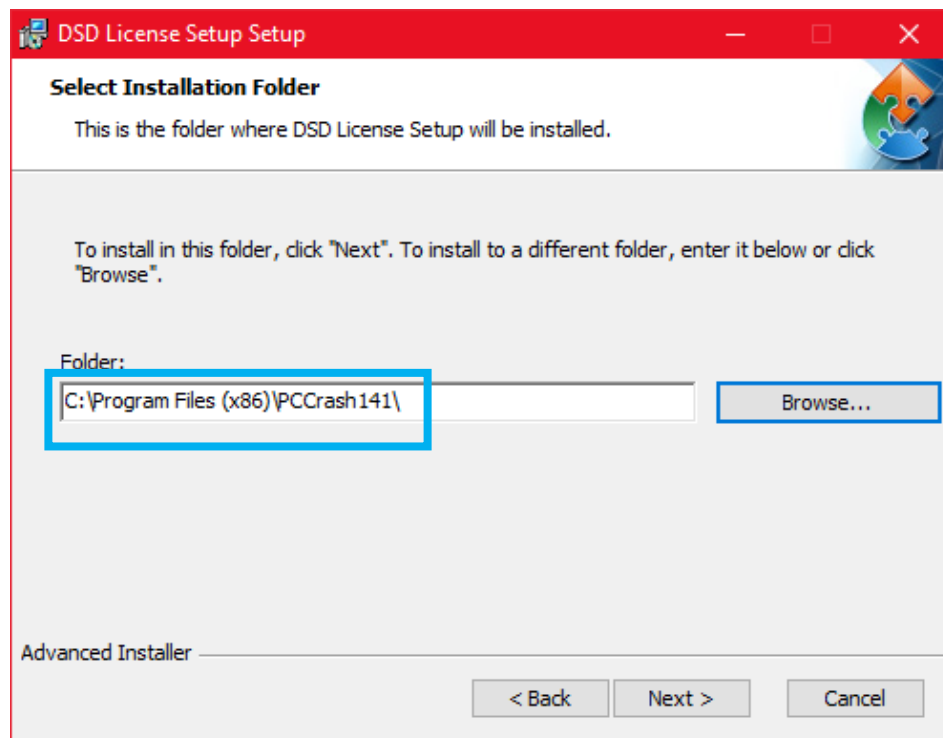


When selecting a folder, select "Browse" and navigate to the "PCCrash141" folder, which was created during the Disk 1 installation. (Likely C:\Program Files (x86)\PCCrash141)

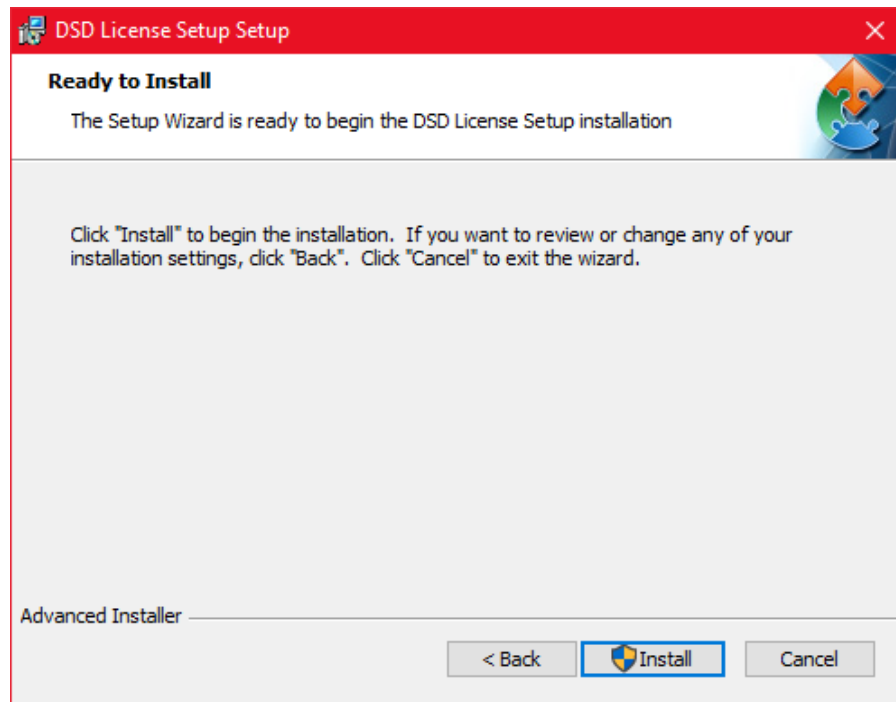
Click the PCCrash141 folder **once** and the folder path should be displayed on the bottom text bar under "Folder name:".



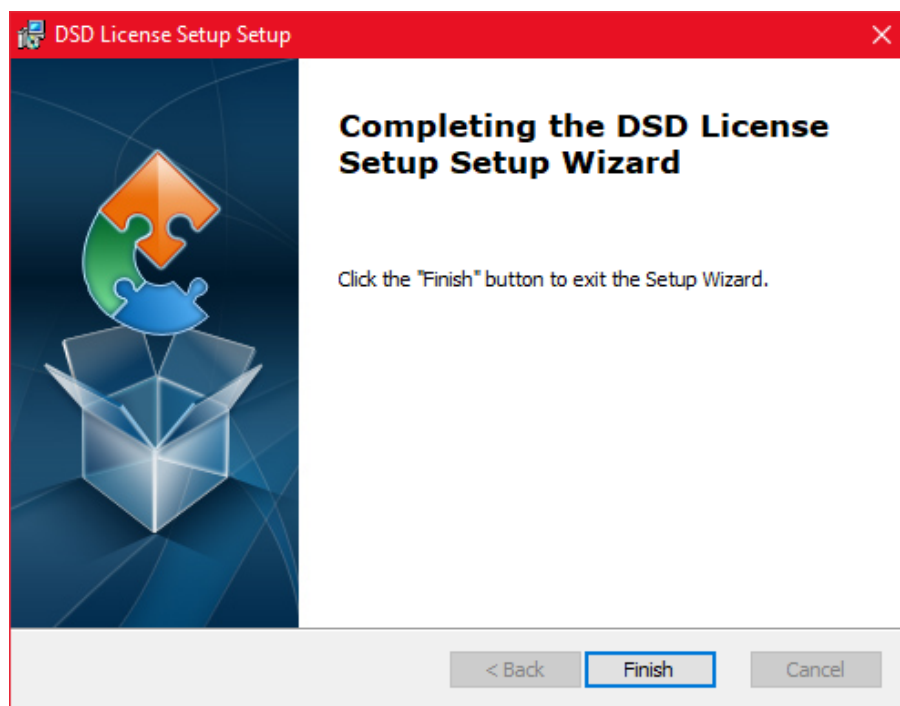
Ensure that the path on the text bar is correct and then click Next.




Click Install. If you get a User Account Control message, click Yes.





Click Finish.



You may check if the Setup.msi file successfully installed the necessary licenses by checking your PCCrash141 folder. On your PC-Crash 14.1 folder, you will notice the addition of the following files and folders:

 win32

 win64

 Strlib32.dll

 Strlib64.dll

These are the necessary files that apply licenses to PC-Crash. If these files are missing, PC-Crash will run in “demo version” or “demo mode” and you will need to contact the Support Team.

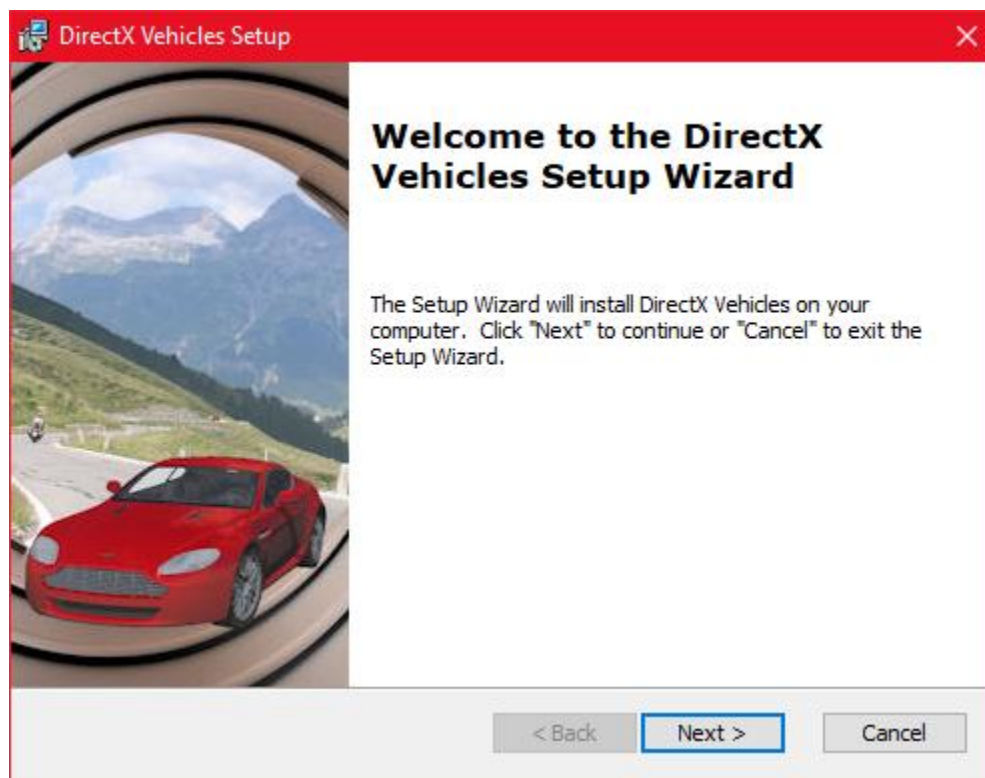
DirectX Vehicles Installation

Navigate to the DirectX vehicles folder and double-click on it.

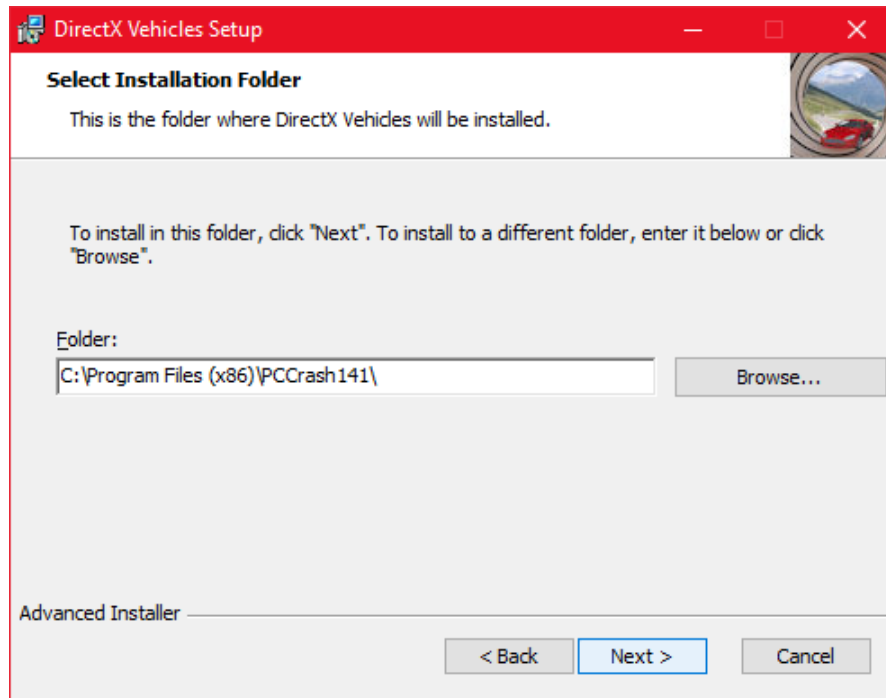
Name	Date modified	Type
DirectX Vehicles	5/19/2023 3:06 PM	File folder
Disk1	5/22/2023 2:15 PM	File folder

Navigate to "DirectX.msi," which you may need to scroll all the way down to find. Double-click on the file and the DirectX Setup Wizard should open. Follow the on-screen instructions.

Click Next.

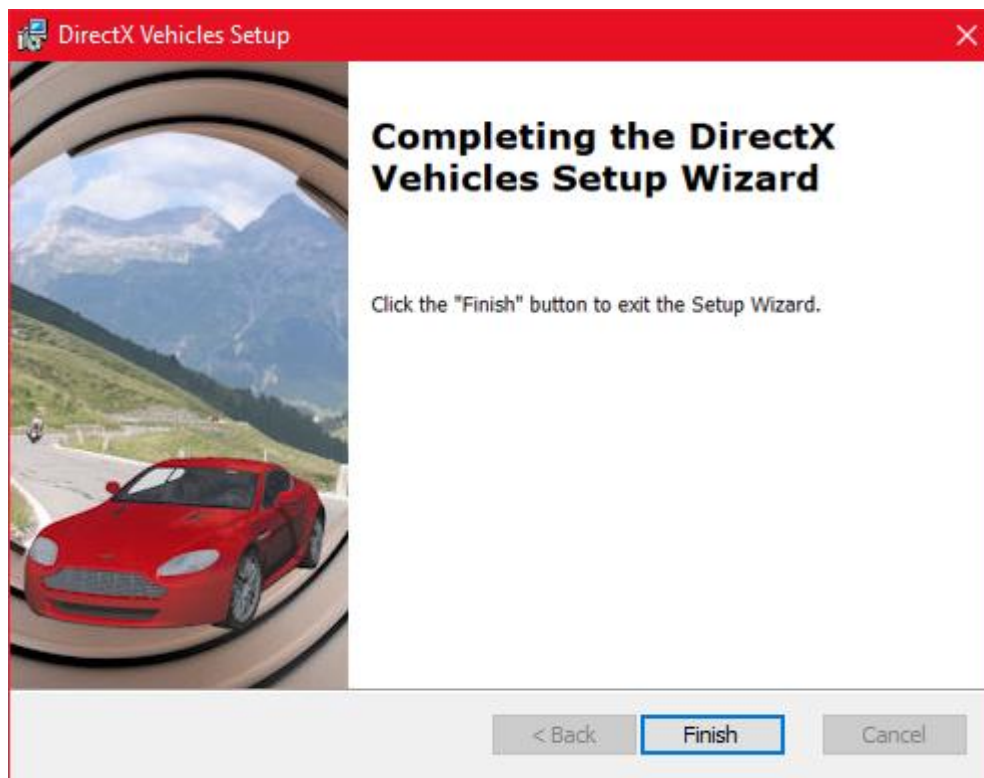


Navigate once again to your PCCrash141 folder (browse to it if you need to), although it may already show the correct path. In either case, ensure that the path is correct and click Next.



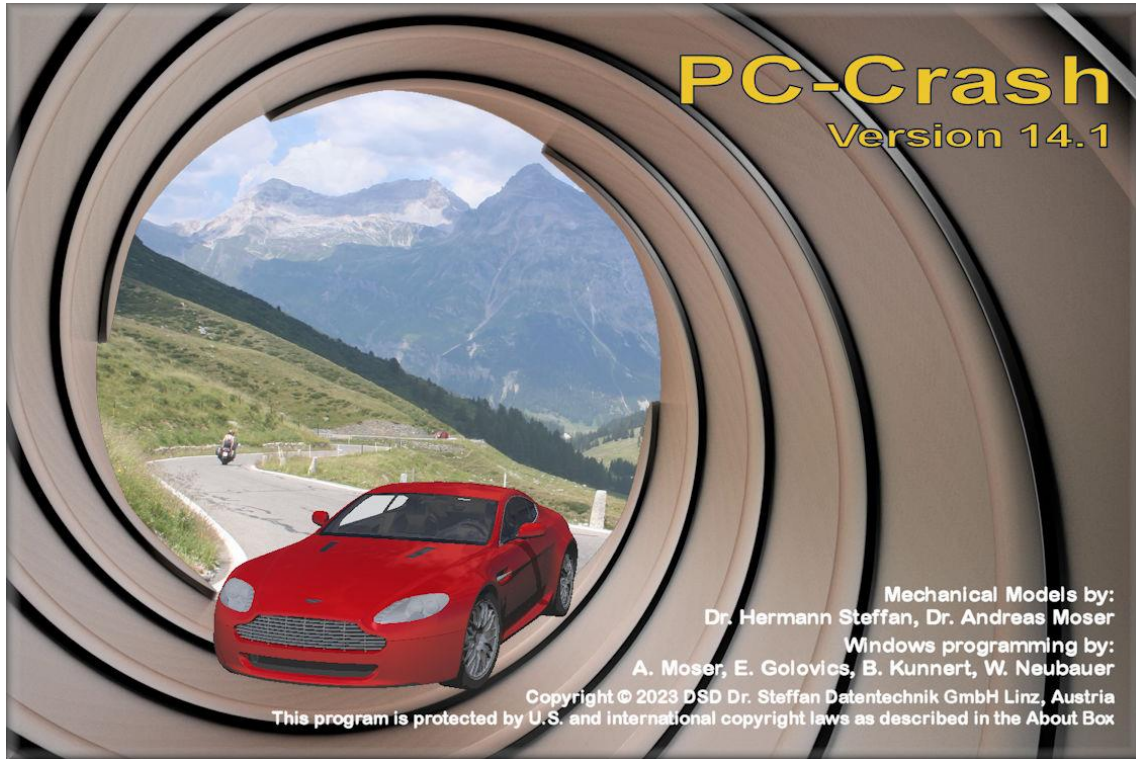
Then click Install. If you get another "User Account Control" message, select Yes.

Wait for DirectX Vehicles to install, which may take some time. Click Finish once the installation is complete.



Run PC-Crash

At this point, PC-Crash has now been completely installed including DirectX vehicle shapes. Insert your dongle/hardware key first and then run PC-Crash. PC-Crash will open in demo version if a dongle/hardware key is not inserted.

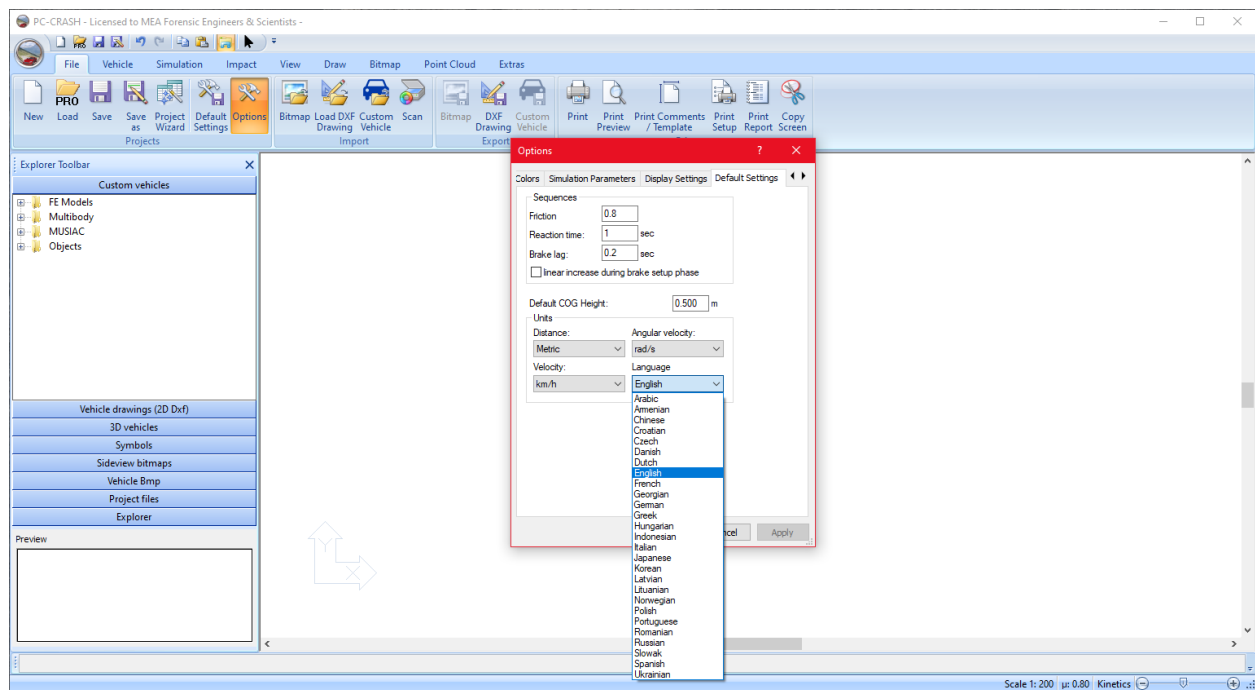


Language

The language selection window will appear the first time you launch PC-Crash. Choose language accordingly.

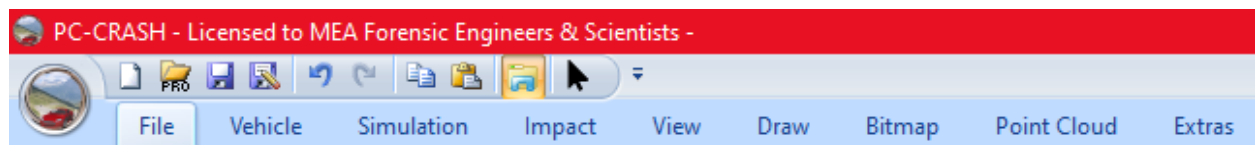


If you need to change the language later, this setting is found under Options > Default Settings (as shown below).



License verification

When PC-Crash is running (and your dongle/hardware key is inserted), your company name will appear at the top of the window.



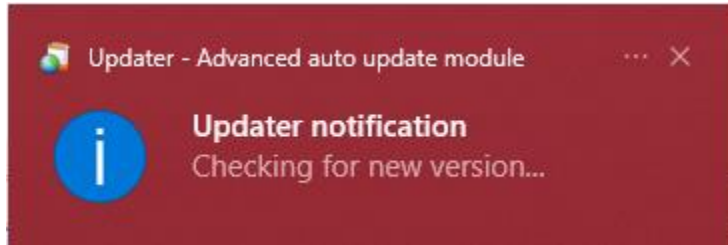
If your company name does not appear at the top and says "Licensed to Demoverision", please double check that you have saved the license files to the 'PCCrash141' folder on your computer.

Also check if your dongle/hardware key is illuminated and/or in a working USB port. Preferably use a port directly on the computer and not on a hub or extension cable.

Still running in "Demoverision"? Please see our FAQ page on our website (www.pc-crash.com).

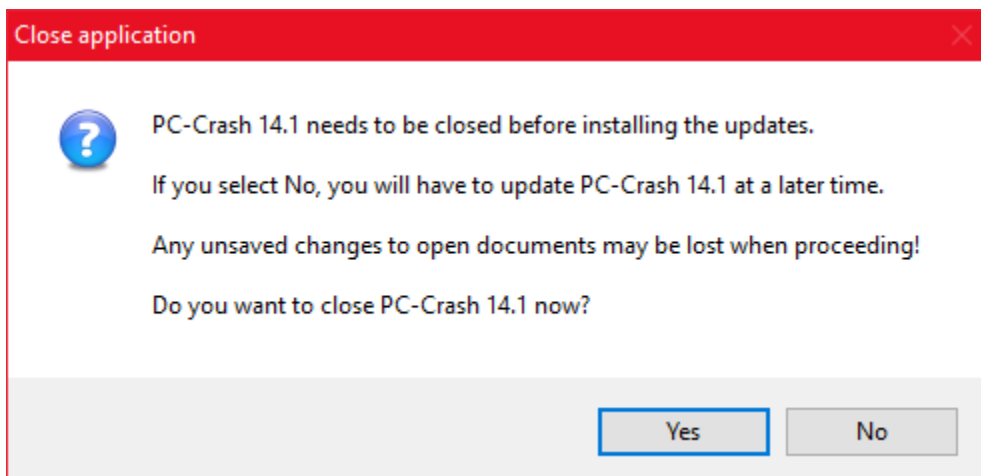
PC-Crash Updater

After launching PC-Crash, you may also have another pop-up window “updater.exe” requesting to make changes to computer. At start-up, PC-Crash will check for updates. You will see the following message in the bottom-right corner of your screen:

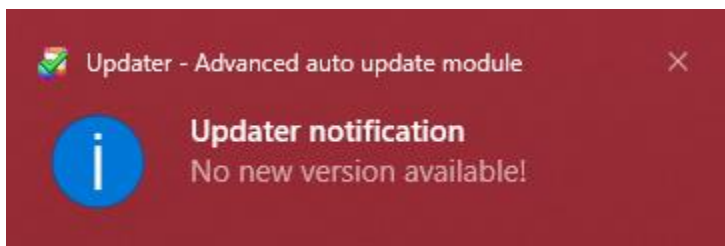


(Please note this updater checks for updates for the current version of PC-Crash; this is not the process to upgrade to a new software version)

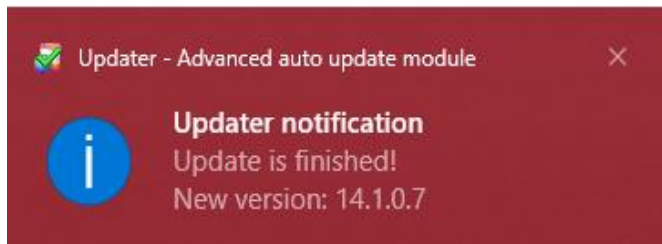
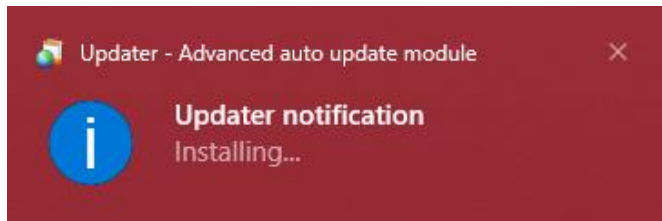
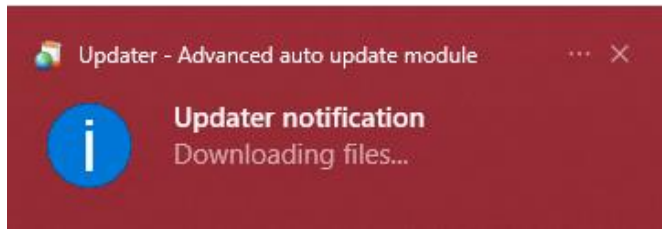
If you select “Yes” to make changes, PC-Crash will check for updates. and notify you before installing updates.



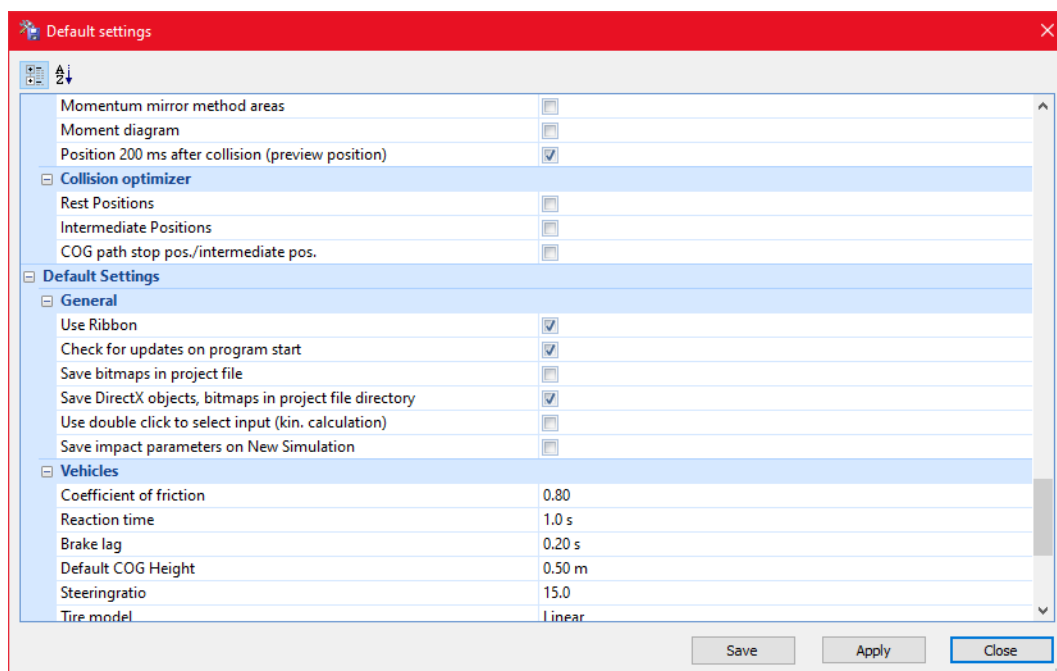
Once the update check is complete, you will see the following message in the bottom-right corner:



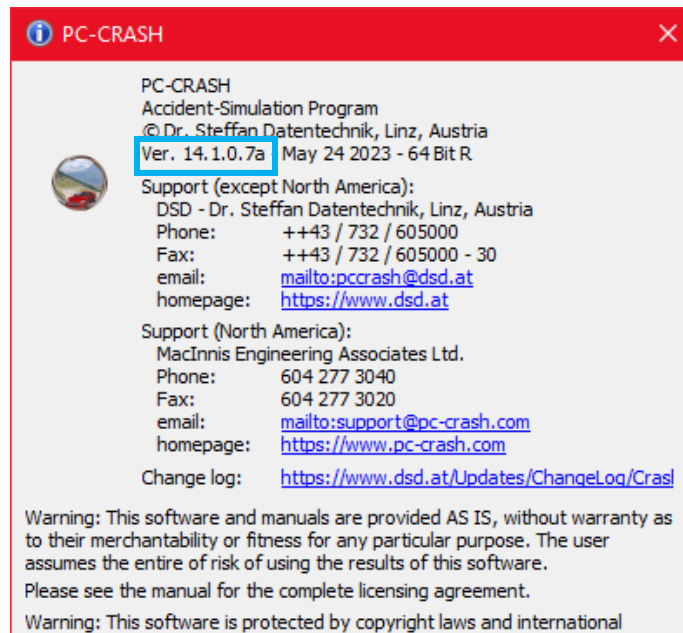
Or this window if an update is available, the following prompts will appear:



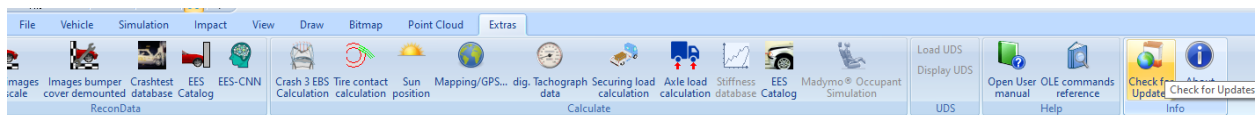
Sometimes the updater can slow down launching of PC-Crash. If you would rather not check for updates on program start, you can turn this feature off. Once PC-Crash is open, go to "Default Settings" and scroll down until you find "Check for updates on program start". Select or de-select the check box depending on your preference.



If you would like to see which version number you are operating, navigate to "About PC-Crash" which is found under the "Extras" tab.



At any time, you can check for updates manually by navigating to the "Extras" tab > "Check for Updates"



Vehicle Database

To access North American vehicles, go to “Default Settings” and change the vehicle database directory to the SPECS folder in your PC-Crash program folder.

Directories	
Project files	C:\Program Files (x86)\PCCrash140\Examples\
Update directories automatically	<input checked="" type="checkbox"/>
Project templates	C:\Users\jtc\Documents\PCCrash140\Templates\
Car Database:	C:\Program Files (x86)\PCCrash140\specs\dsd 2022.db
Database preview images	C:\Program Files (x86)\PCCrash140\DBPreview\
Database preview images 2	C:\Program Files (x86)\PCCrash140\DBPreview\Pict
Custom vehicles	C:\Users\jtc\Documents\PCCrash140\CustomVehicles\
Vehicle DXF Files:	
Vehicle drawings (2D Dxf)	C:\Program Files (x86)\PCCrash140\2DDxf\
Symbols	C:\Program Files (x86)\PCCrash140\Symbols\
Sideview Dxf	C:\Program Files (x86)\PCCrash140\2DDxf\
Sideview bitmaps	C:\Program Files (x86)\PCCrash140\Sidebmp\
Vehicle Bmp	C:\Program Files (x86)\PCCrash140\Topbmp\
3D vehicles	C:\Program Files (x86)\PCCrash140\3DDxf\
3D vehicles (X61)	C:\Program Files (x86)\PCCrash140\3DDxf\
Animations	
Animations	C:\Program Files (x86)\PCCrash140\
Update directories automatically	<input checked="" type="checkbox"/>
Bitmaps	
Bitmaps	C:\Program Files (x86)\PCCrash140\
Update directories automatically	<input checked="" type="checkbox"/>
Dxf drawings	
Dxf drawings	C:\Program Files (x86)\PCCrash140\2DDxf\
Update directories automatically	<input checked="" type="checkbox"/>

To update the vehicle database to include the latest model year

Please visit our website: [PC-Crash FAQ](#) and navigate to the following:

🔔 **My Vehicle database doesn't have the latest model year.**

Download this SPECS update, and unzip to the specs subfolder in your PC-Crash program folder.

Select “Download this SPECS” to download the update.

Unzip the file and move it to the 'specs' subfolder in your PC-Crash program folder.

This PC > OS (C:) > Program Files (x86) > PCCrash140				
Name	Date modified	Type	Size	
ShellExtension	6/29/2022 11:23 AM	File folder		
Sidebmp	6/29/2022 11:25 AM	File folder		
Sky Textures	6/29/2022 11:20 AM	File folder		
specs	6/29/2022 11:22 AM	File folder		

Contact Information

PC-Crash Support

support@pc-crash.com

PC-Crash Courses

courses@pc-crash.com

General Inquiries

info@pc-crash.com

Want to ensure you hear all the latest news regarding PC-Crash? Join our mailing list and you will be notified of new courses/workshops, promotions, and new releases. Emails will come from our general email: info@pc-crash.com

Click [HERE](#) to join our mailing list.